



COMPANY PROFILE

THE ART OF SOLUTIONS
DESIGN TO BE DIFFERENT

RESIDENCE DESIGN

WECONS
& PARTNERS





WVK GROUP is a full-design service company giving services and consulting to clients located in Thailand and abroad. Our design teams made up of designers and staffs who are highly experienced on their specialized skills. Our goal is to deliver the highest potential in design creativity and to develop the best solutions for every client's projects.



WECONS is a Design-and-Build service company providing a completed solution from the beginning to the end. We do from Designing of Project Space to executing the Project Construction. Our Designers and Site Supervisors would work together and get the Project complete meeting both Budget and Timeline.

OUR SERVICES



Interior Design Lighting Design

WVK Group Co., Ltd. is a full service residential and commercial interior design. Our designers have expertise in local and international high-end architectural design creating beautiful interiors decoration, which reflects client's taste and lifestyle. We coordinate, supervise, and especially find solutions for the design problems to make client's dreams come true.

Our work process is based on analysis and understanding of the client's objectives to create the design reflecting their image, and enhancing their identity that can meet their requirements.

With our professional experiences, we have flexible interior design services providing a wide range of designers; residential, commercial retail units, resort hotels, condominiums, offices, showrooms, museums, restaurants, club houses, and shops, entertainment and beauty centers including all construction sites.

There are mainly 4 stages of interior design:

- ❖ Planning
- ❖ Design Concept
- ❖ Working drawing and specification
- ❖ Site supervision

Interior and Lighting Design Service :

- ❖ Planning by integration of all work for building service and coordination with engineers and other specialists.
- ❖ Preparation of production design, drawing, and details
- ❖ Preparation of specification
- ❖ Selection of all materials and equipment
- ❖ Cost evaluation
- ❖ Provision and selection of contractors
- ❖ Positioning of electrical wiring, water supply, and air-conditioning
- ❖ Site supervision and management



OUR SERVICES

Graphic Design

WVK Group Co., Ltd. is fluent in graphic design.

We serve our clients with every aspect of graphic design services; logo, signage, corporate identity and packaging design. We have our design profile accepted in both domestic and international level. We realize that the value of design can be used to dramatically enhance product image. This helps our clients to compete in their market and eventually attain success in their services, and sales for their companies.

Our experiences in graphic design are creating logo and signage for individuals and corporate; beauty centers, restaurants, spas, shops, land developer and hotels etc. Moreover, we are well - known especially as a specialist in product and packaging design: furniture, consumer packaging design and consumer product design

Industrial Design Service

- ❖ Image Design of Product
- ❖ Plan and Development
- ❖ Conceptual Design and Artwork
- ❖ Product Design and Furniture Design
- ❖ Packaging Design
- ❖ Logo and Signage
- ❖ Displays
- ❖ Editorial Design; Books, Annual Reports, Brochures, and Posters etc.



- ❖ Turnkey package
- ❖ Project management for budget control and timeline
- ❖ Project coordination with other parties
- ❖ Site supervisor from beginning throughout the whole project



Wiboon Tiramongkol
Managing Director

Work Experiences

- 2002-Current: Design Team Managing Director -Interior & Lighting Design Dep.,
WVK GROUP Co.,Ltd., Bangkok
- 2015-Current: Managing Director, Wecons & Partner Co.,Ltd.
-

- 1999-2002: Lighting Designer, KUGLER TILLOTSON ASSOCIATES Co.,Ltd., New York, USA
- 1992-1996: Self-employed Interior Designer/Manager, KTP Co., Ltd., Bangkok
- 1991-1992: Interior designer, WARANZ DESIGN GROUP Co., Ltd., Bangkok
- 1991: Interior designer, RIFENBURG & RIRKRIT ARCHITECTS, Bangkok

Education

- 2018-2019: Postgraduate Diploma in "Innovation and Design Thinking"
EMERITUS Institute of Management in collaboration with MIT
Management Executive Education, Columbia Business School and
Tuck Executive Education at Dartmouth, USA
- 2005-2007: MBA -Master of Business Administration Executive Program.
CHULALONGKORN UNIVERSITY, Bangkok
- 2000: Advanced Level Diploma, IESNA ED-150, IESNY
[Illuminating Engineering Society-New York], New York, USA
- 1997-1999: M.I.Arch., Master of Interior Architecture, UNIVERSITY OF OREGON, Eugene, Oregon, USA
- 1998: Advanced Level Diploma, Interior Design Program.
MARYLHURST COLLEGE, Oregon, USA
- 1997: Advanced Level Diploma, American English Language and
Culture, LEWIS & CLARK COLLEGE (ISALC), Oregon, USA
- 1987-1991: BA -Bachelor of Arts Degree in Interior Design, SILPAKORN UNIVERSITY, Bangkok

Teaching Experiences

- 2002-Current: Instructor, Decorative of Arts Department (interior design)
for Bachelor and Master degree. SILPAKORN UNIVERSITY, Bangkok
- 2003-Current: Instructor, Architecture Department -Bachelor Degree & Co-Advisor, Architecture
Department - Master Degree THAMMASAT UNIVERSITY, Bangkok
- 2004, 2005, 2007: Instructor, Baan & Suan Training Program, Baan & Suan Magazine AMARIN
PRINTING (PLC), Bangkok

Professional Experiences

2002-Current:: WVK GROUP Co., Ltd. / Wecons & Partner Co.,Ltd

Hospitality Design:

City Hotel / Thailand

- ❖ Rosewood Hotel Bangkok, Ploenchit, Bangkok (Design Collaboration)
- ❖ Millennium Hilton Bangkok, Klongsan, Bangkok (Design Collaboration)
- ❖ Amari Don Muang Airport Bangkok Hotel, Bangkok
- ❖ Centara Grand & Bangkok Convention Centre, CentralWorld, 26th Floor for Fitness Center and Spa, Ratchaprasong, Bangkok
- ❖ Kram Hotel, Pattaya, Chonburi
- ❖ Civighar, Thonglor 13, Bangkok
- ❖ Civic Place, Sukhumvit 63, Bangkok
- ❖ The Novotel Hotel, Siam Square, Bangkok, Executive Guestroom.

City Hotel / Oversea

- ❖ Excellence Hotel, Yangon, Myanmar
- ❖ ACMAR Hotel & Residence, Malaysia
- ❖ Escape Hotel, Loikaw, Myanmar
- ❖ Julia Hotel, Phanompen, Cambodia
- ❖ Callavelle Hotel (Saigon Saigon Bar); Saigon, Vietnam

Resort Hotel / Thailand

- ❖ Centara Grand Beach Resort & Villas Krabi, Phase I,II & III, Krabi
- ❖ Centara Karon Resort Phuket, Karon, Phuket (WIP)
- ❖ Centara Grand Beach Resort Phuket, Renovation of Main Lobby, Patong, Phuket
- ❖ Centara Seaview Resort khao lak, Phang Nga
- ❖ Centara Anda Dhevi Resort & Spa, Ao Nang, Krabi
- ❖ Centara Aonang Beach Resort, Ao Namg, Krabi
- ❖ Centara Huahin, Damnernkasem Rd., Hua Hin, Prachuabkirikhan
- ❖ The Blue Marine Resort & Spa, Phuket; Managed by Centara, Patong, Phuket
- ❖ Koh Yao Yai Village, Koh Yao Yai, Phang-nga
- ❖ The Briza Beach Resort & Spa; Koh Samui, Surat-Thani
- ❖ Sukko Spa & Wellness Center; Phuket
- ❖ Sunsuri Phuket
- ❖ Long Beach Garden Hotel,Pattaya
- ❖ Palmyra Patong Resort, Patong Beach, Phuket
- ❖ Anyavee Beach Resort, Tubkae, Krabi
- ❖ Samui Peninsula Hotel ; Koh Samui, Surat-Thani
- ❖ DASADA Retail Shop and Spa, PrachineBuri
- ❖ The Secret Garden Spa (Cheevajit Healing Center) Rose Garden, Nakornpathom

Resort Hotel / Oversea

- ❖ Le Palais Juliana, Luang Prabang, Laos
- ❖ L'Eau Oure/ Spa, Belgium

Historical Thailand Hotel

- ❖ On-On Hotel, Phuket
- ❖ WOO Boutique Hotel

Corporate Design:

- ❖ DFDL, Mekong Legal & Tax Advisors Co.,Ltd., Silom, Bangkok
- ❖ Aimgroup Head Quarter, Chachengsao
- ❖ Aimpack Warehouse Office, Kruthekreetha Soi 33, Bangkok
- ❖ Aimpack Bangkok Office, Kruthekreetha Soi 20, Bangkok
- ❖ River Engineering, Ladpraow 64, Bangkok
- ❖ CCL Label Pharse I, Bangpakong, Chachoengsao
- ❖ CCL Label Pharse II, Nikom Well Grow- Samuthprakarn
- ❖ OMG Community Playground, Rama II, Bangkok
- ❖ Save the children, Singapore
- ❖ NED Office Revovation, Khok Samrong, Lopburi
- ❖ NEC, Thaniya Building, Silom, Bangkok
- ❖ NEC Logistic (Thailand) Co., Ltd.; Silom, Bangkok
- ❖ SIM Consultant Co.,Ltd., Thonburi, Bangkok
- ❖ Popidols Co., Ltd., Asoke Tower, Sukhumvit Rd., Bangkok
- ❖ Thaniya Plaza, Lobby G. Floor Renovation ; Silom, Bangkok
- ❖ Alconix (Thailand) Ltd. ; Silom, Bangkok
- ❖ Otto Group (Thailand) Co., Ltd. ; Phase I ,Silom, Bangkok
- ❖ Save The Children UK, Maniya Center Building, Ploenchit Rd., Bangkok

Corporate Design & Turnkey:

- ❖ DFDL (Thailand) Ltd. Rajanakarn Building, Sathon Rd. Bangkok
- ❖ C asean, Dream office 14A floor, Cyber World Tower, Bangkok
- ❖ True Corporation Public Company Limited. 18th-19th Floor, AIA Capital Center, Bangkok
- ❖ FPG Insurance (Thailand) Office, 16th Floor Thaniya Plaza Building, Bangkok
- ❖ THAI S.A. INTER-PRODUCT Company Limited. 19th Floor, Sathorn Square, Silom, Bang Rak, BKK
- ❖ Armajaro Singapore Pte Ltd., Boonmitr Building, Bangkok
- ❖ EYC,Tisco Tower, North Sathorn Rd., Bangkok
- ❖ ELKEN (Thailand) Ltd., Jasmine City Building, Bangkok
- ❖ HANA Corporate Office, Ayutthaya, Thailand
- ❖ Natural Energy Development Office, Lopburi
- ❖ SRUP ANAN PLASTIC Offiec, Poojaosmingprai road, Smutprakarn
- ❖ Enerfo Corporation Office, Silom, Bangkok

Learning Space Interior Design:

- ❖ MBA CU – NGO HOK, Chulalongkorn University
- ❖ 50 Years Anusorn Building, Chulalongkorn University
- ❖ Thammasart Office, Phatumthani
- ❖ ICT & Library, Bangneaw, City of Phuket
- ❖ Renovation of Chulalongkorn Business School, Ph. 2 Professor's 13 Rooms
Ph. 3 CBS Classrooms Chulalongkorn University, Bangkok
- ❖ Enconcept E-Academy, Khonkain / Pinkrow, Bangkok Musuem Design:
- ❖ InsightKIDs, Paradise Park, Bangkok
- ❖ Boston Bright, Silom Soi1
- ❖ Boston Bright, Chamchuri Square
- ❖ Energy Museum, Chiang mai
- ❖ Soil Museum, Land Development Department, Bangkok
- ❖ Angkor National Museum: Siem Reap, Cambodia (Design Collaboration)
- ❖ Stamp Museum, Post and Telegraph Department, Bangkok

Learning Space Interior Design & Turnkey:

- ❖ Energy Learning Centre Phase I, Ban Chang, Rayong
- ❖ WeLearn, Maneeya Center, Ploenchit Rd, Bangkok

Residential Design :

- ❖ Manick Hill Villa, Phuket
- ❖ Khun. Erna's Residence, Phuket
- ❖ Khun. Tom's Condominium, Abstract Condominium, Bangkok
- ❖ Mr. Olaf's Condominium, The River, Bangkok
- ❖ Khun. Damrongpol's Residence, Klongsamwa, Bangkok
- ❖ Khun. Ohm's Residence, 26th Fl., Wind Ratchayothin, Bangkok
- ❖ Khun. Brian's Condo, Sathorn Gardens, Bangkok
- ❖ Dr.Karndee's Residence, Soi ABC Bang Kapi, Huai Khwang, Bangkok
- ❖ V Condominium, Ladkrabang, Bangkok
- ❖ Ekamai Gardens I&II, Ekamai, Bangkok
- ❖ Civic Horizon Tower- Serviced Apartment, Sukhumvit 63, Bangkok(WIP)
- ❖ Civic Park (additional work)-Serviced Apartment, Thonglor 13, Sukhumvit 55,Bangkok
- ❖ Khun. Manit's Condominium, Veranda Residence, Pattaya
- ❖ Khun. Nini's Residence, Lumpini, Bangkok
- ❖ Khun. Vayu's Residence, Ban Klang Mueng Ratchada, Bangkok
- ❖ Dr.Wilert's Residence, Chamchuri Square Residence, Phathumwan, Bangkok
- ❖ Dr.Karndee's Residence, Satorn Garden, Bangkok
- ❖ Khun. Urarom's Condominium, Lumpini River Side, Bangkok
- ❖ Lerdlumampun Residence,
- ❖ Leekanchanakorn Residence, Cha-am, Petchaburi
- ❖ Uahwatanasakul Residence, 23rd Floor, the Lakes Bldg. Bangkok
- ❖ Patra- Yanan Residence, Nichada Thani, Bangkok
- ❖ Lamatipanont Residence, Phutamonthon Sai 2, Bangkok

Retail & Showroom Design :

- ❖ Yatanarpon Shopping Mall, Yangon, Myanmar
- ❖ PTT Petrol Station, Prachinburi
- ❖ Practika Showroom At Saimai and Centralworl, Bangkok
- ❖ True Coffee & True Shop, Siam square Soi 3, Bangkok
- ❖ Shino Shell Park & Plaza, Phuket
- ❖ VP. GEMS, Suratthani
- ❖ Dilavie Shop Hua-Hin, The mall Korat, Terminal 21 Korat
- ❖ Dilavie Shop, Hat Yai, Central Pinklao, Central Rama2, Bangkok, Mega Bangna, Salaya, Fashion Island, Phuket, Central Ladpraow, Khonkhen, Ubon
- ❖ PSC Showroom Willington Ratchada, Bangkok
- ❖ SALIOT Showroom, Porsche Centre Pattanakarn Building, Bangkok
- ❖ Dr. Somchai Shop, Central Pinklao, Bangkok
- ❖ Sangdomrong Kitchenware Center, Amper Muang, Phuket
- ❖ Sony Store, EmQuartier Sukhumvit 35, Bangkok
- ❖ Sony Shop , Siam Paragon, Bangkok
- ❖ Maneekram Cafe, Phuket
- ❖ Maneekram Duty Free, Phuket
- ❖ Trendy Day Retail Shop, Ekamai Gateway, Bangkok
- ❖ Eye Bright, Royal Garden Plaza, Pattaya
- ❖ The Horizon Mall, Sukhumvit 63, Bangkok
- ❖ Trez Jewelry, Siamparagon Department Store, Bangkok
- ❖ Seara (Sports Engineering And Recreation Asia Ltd.), Thonglor, Bangkok
- ❖ Cocoon Shop; New York, U.S.A.
- ❖ Home Au Fait, Phnom Penh, Cambodia
- ❖ Mekong Bank- Executive Lounge, Siem Reap Cambodia
- ❖ D' MOUJ Shop, ANM Cultural Mall, Siem Reap Cambodia
- ❖ Neang Mliss, ANM Cultural Mall, Siem Reap Cambodia

Retail & Showroom Design & Turnkey :

- ❖ True Lifestyle Retail Co.,Ltd. 1st floor Digital Gateway, Siam Square, Bangkok
- ❖ True Distribution & Sales 2nd & 3rd floor Digital Gateway, Siam Square, Bangkok
- ❖ True Incube 4th floor Digital Gateway, Siam Square, Bangkok
- ❖ True Coffee & True Shop, Siam square Soi 2, Bangkok
- ❖ True Coffee & True Shop, Chamchuri Square, Bangkok

Restaurant Design :

- ❖ Café 1912, Alliance française de Bangkok, Wireless Road, Bangkok
- ❖ Fong Kum Restaurant, Chinatown WestEnd, Salaya, Nakhon Pathom
- ❖ Pancake Café, Nawamin Avenue and The Circle Ratchapruek, Bangkok
- ❖ Play Station, I'm Park Samyan, Bangkok
- ❖ Beccofino Italian Restaurant and Grill , 55th Plaza , Sukhumvit 55, Bangkok,
- ❖ Coconut Grill & Bar, Phi Phi Island Village, Phuket
- ❖ Bussaracum, Sri Wiang Silom, Bangkok
- ❖ Le petit zinc I, Sukhumvit ,Bangkok
- ❖ Le petit zinc II , Yenargard Road,Bangkok
- ❖ Bunfe' The Coffee Bar & Bistro, Surawong, Bangkok
- ❖ Miss Zara, Krabi
- ❖ Ananda Restaurant, Tokyo, Japan

Healthcare Design :

- ❖ Promjai Dental Clinic, Patong Beach, Phuket
- ❖ Dent Smile, Pattanakarn Soi 30, Bangkok
- ❖ Thaniya Dental Clinic, Silom Road, Bangkok
- ❖ Bangkok International Dental Center, Siam Square, Bangkok
- ❖ Bangkok International Dental Center, Ratchada, Bangkok
- ❖ Thaniya Beauty Center, Silom Road, Bangkok
- ❖ BE PROUD Clinic, Sukhumvit 101, Bangkok
- ❖ B Balance Clinic, Sukhumvit 63 (Ekkamai), Bangkok

1999-2002 : KUGLER TILLOTSON ASSOCIATES CO., LTD.

- ❖ Marriott Marquis 8th Fl.Atrium Renovation; New York. USA
- ❖ Seattle Central Public library ; Seattle, WA, U.S.A.
- ❖ Abercrombie & Fitch Headquarters Campus; U.S.A.
- ❖ American Insurance Group [AIG] Tower Hong Kong
- ❖ New York University, School of Law, New York, USA
- ❖ Shlumberger, Citicorp Center; New York, U.S.A.
- ❖ SFX Headquarters; New York, U.S.A.
- ❖ Bank of China; Beijing, China
- ❖ Feirstein Capital; New York, U.S.A.
- ❖ Publicist Headquarters; New York, U.S.A.
- ❖ Booklyn Public Library, Children Reading Room; Brooklyn, NY U.S.A.
- ❖ Gottesman Exhibition Hall, NY Public Library; NY, U.S.A.
- ❖ Prada Stores; New York, U.S.A.
- ❖ Prada Stores; San Francisco, CA, U.S.A.

Award :

Honorable Mention Award from IIDA for Hospitality Category



Korpon Leopairote
 Identity Design Director

Education

1997-1999	Master of Arts, SAVANNAH COLLEGE OF ART AND DESIGN, Savannah, Georgia, USA
1996	Advanced Level Diploma, English As A Second Language Program, UNIVERSITY OF ILLINOIS AT CHICAGO, USA
1990-1995	Bachelor of Industrial Design (5 year program), CHULALONGKORN UNIVERSITY, Bangkok, Thailand

Work Experiences

2015-Current	Managing Director, Wecons & Partner Co., Ltd.
2007-Current	General Manager, Innoline Co., Ltd., Bangkok, (Mediumem Furniture Business)
2005-Current	Marketing Director and Shareholder, LUXX Hotel Bangkok, (Hotel Business)
2003-Current	Marketing Director and Shareholder, CRAFACTOR Co., Ltd., Bangkok, Thailand (Exotic Furniture Business)
2002-Current	Director of Industrial Design and Shareholder, WVK GROUP Co., Ltd., Bangkok, Thailand (Design Business)
2001-2002	Design Coordinator, GRANGE FURNITURE, Inc., New York City, New York, USA
2000-2001	Part-time Interior Designer, ROSATI DESIGN, New York City, New York, USA
2001	Freelance Graphic Designer, Paper Magazine, New York City, New York, USA
1999-2001	Industrial Designer, DAKOTA JACKSON, Inc., New York City, New York, USA
1996-1997	Part-time Furniture Designer for a residential project in collaboration with "P-Center," Furniture Company, Bangkok, Thailand
1995	Part-time Environmental Graphic Designer, "Big C Department Store," Bangkok,

Professional Experience

Present **WVK Group Co., Ltd.**

- ❖ Environmental Graphic and Logo ; Srivijaya Resort, Samui
- ❖ Environmental Graphic and Signage ; TCC Technology Co., Ltd., Bangkok
- ❖ Brochure ; Beach Village & Spa, Phuket
- ❖ Brochure ; Palm Beach Resort, Phuket
- ❖ Logo and Stationery ; Cocoon shop, New York, U.S.A.
- ❖ Logo and Stationery ; VEGA Cafe' and VEGA flower shop, Sukhumvit, Bangkok
- ❖ Environmental Graphic and Logo ; Thaniya Beauty Center
- ❖ Medical packaging design ; Thaniya Medical Center Ltd.

Exhibitions

- 1999 International Contemporary Furniture Fair (ICFF), New York City, New York, USA - Exhibitor; Swing lamp

Awards

- 1999 Finalist, NICHE Awards, Philadelphia, Pennsylvania.
- 1999 Honorable Mention, "Far from Home Exhibition, Savannah College of Art and Design, Savannah, Georgia.
- 1994 1st Prize, "School Milk" Graphic on Packaging, Organized by the Thai Government.
[The design was used on free milk container throughout Thailand in 1994.]

Published

- 2000 Swing lamp - A Guide To The Best In Contemporary Lighting Design by Tina Skinner,
Publisher: A Schiffer Design Boo



Khun Mor Tea's Condominium

Ampher Muang, Lopburi

Interior Budget : 70 Million Baht

Scope of service :

- Penthouse
- Entry Hall
- Living Room
- Dining Room
- Kitchen
- Bedroom
- & Service Apartment Units



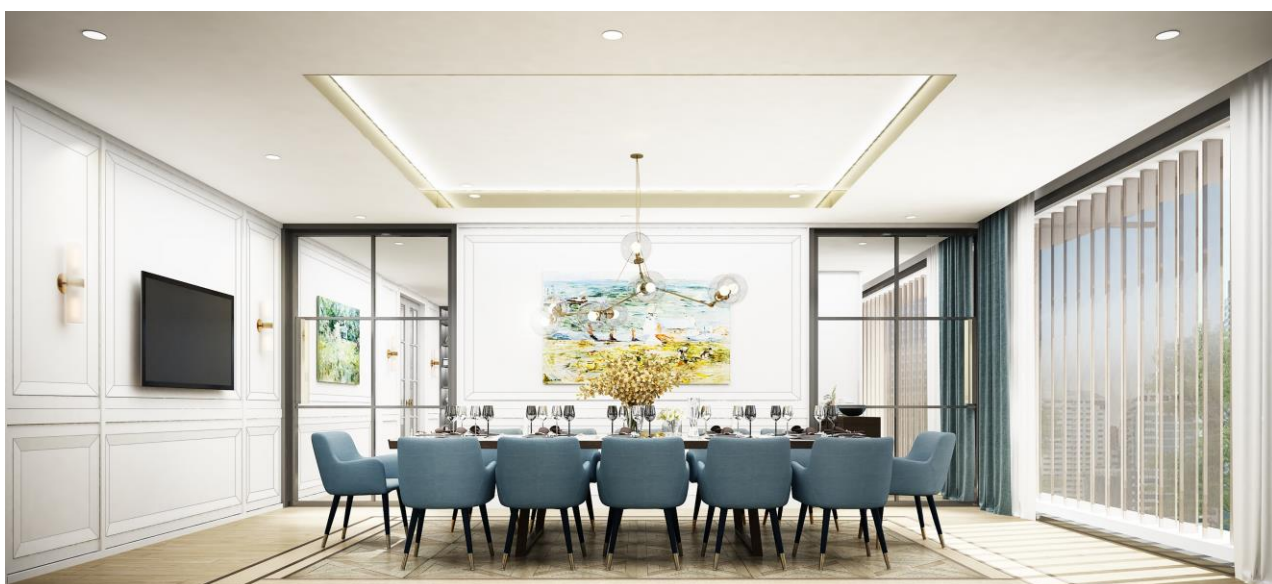
Khun Mor Tea's Condominium

Ampher Muang, Lopburi

Interior Budget : 70 Million Baht

Scope of service :

- Penthouse
- Entry Hall
- Living Room
- Dining Room
- Kitchen
- Bedroom
- & Service Apartment Units



Khun Mor Tea's Condominium

Ampher Muang, Lopburi

Interior Budget : 70 Million Baht

Scope of service :

- Penthouse
- Entry Hall
- Living Room
- Dining Room
- Kitchen
- Bedroom
- & Service Apartment Units



Khun Mor Tea's Condominium

Ampher Muang, Lopburi

Interior Budget : 70 Million Baht

Scope of service :

- Penthouse
- Entry Hall
- Living Room
- Dining Room
- Kitchen
- Bedroom
- & Service Apartment Units



Khun.Tripong's Condominium

L&H Ratchaprug Rd., Bangkok

Interior Budget : 7.3 Million Baht

Scope of service :

- Living Room
- Dining Room
- Bedroom
- Study Room



Khun.Tripong's Condominium

L&H Ratchaprug Rd., Bangkok

Interior Budget : 7.3 Million Baht

Scope of service :

- Living Room
- Dining Room
- Bedroom
- Study Room



Khun. Mani's Condominium

Veranda Residence Pattaya

Interior Budget : 2 Million Baht
Area : 121.50 Sq.m

Scope of service :

- Master Bedroom
- 2 bedrooms
- Living & Dining area
- Pantry



Khun. Mani's Condominium

Veranda Residence Pattaya

Interior Budget : 2 Million Baht
Area : 121.50 Sq.m

Scope of service :

- Master Bedroom
- 2 bedrooms
- Living & Dining area
- Pantry



Manick Hillside

Phuket

Interior Budget : xxx Baht

Scope of service :

- Pool Terrace & Pool Sala
- Master bedroom
- Living & Dining room
- Toilet



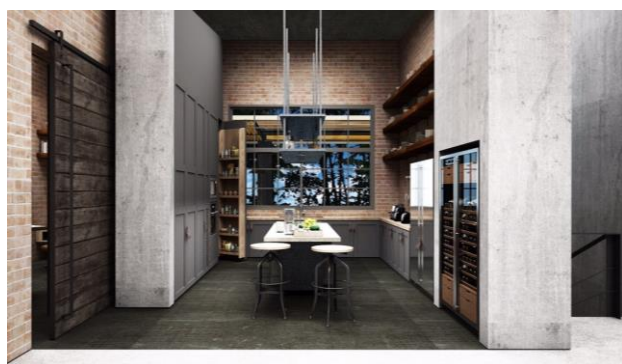
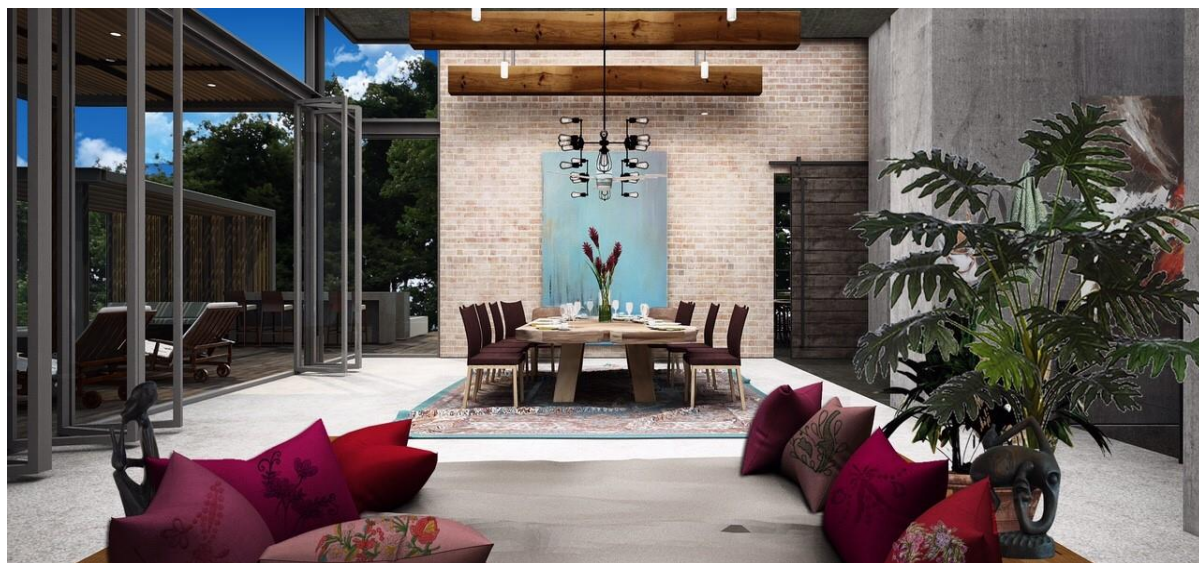
Manick Hillside

Phuket

Interior Budget : xxx Baht

Scope of service :

- Pool Terrace & Pool Sala
- Master bedroom
- Living & Dining room
- Toilet



Khun Erna's Pool Villa

Manick Hillside, Phuket

Interior Budget : 13.7 Baht

Scope of service :

- Pool Terrace & Pool Sala
- Kitchen
- Master bedroom
- Family & Library room
- Kitchen & Bar
- Living & Dining room
- Toilet



Khun Erna's Pool Villa

Manick Hillside, Phuket

Interior Budget : 13.7 Baht

Scope of service :

- Pool Terrace & Pool Sala
- Kitchen
- Master bedroom
- Family & Library room
- Kitchen & Bar
- Living & Dining room
- Toilet



Khun.Urarom's Condominium

Lumpini River Side, Bangkok

Interior Budget : 1.3 Million Baht

Scope of service :

- Bedroom
- Living area
- Kitchen



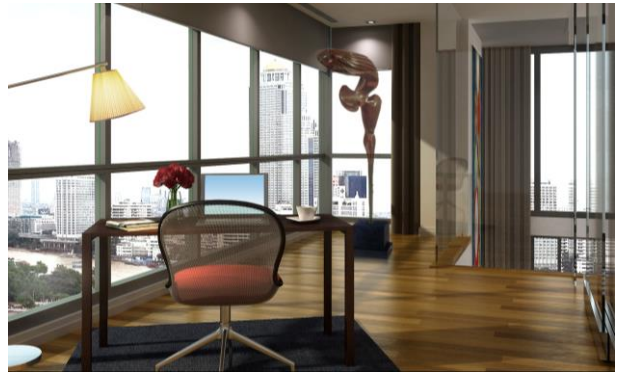
Khun.Tom's Condominium

Abstract Condominium, Bangkok

Interior Budget : 490,000 Baht

Scope of service :

- Bedroom
- Living room



Khun.Olaf's Condominium

The River, Bangkok

Interior Budget : 2.8 Million Baht

Scope of service :

- Master Bedroom
- Bedroom
- Living Room
- Dining Room
- Working Room



Khun.Olaf's Condominium

The River, Bangkok

Interior Budget : 2.8 Million Baht

Scope of service :

- Master Bedroom
- Bedroom
- Living Room
- Dining Room
- Working Room



Khun.Damrongpol's Residence

Klongsamwa, Bangkok

Scope of service :

- Master Bedroom
- Bedroom
- Dining Room
- Living Area
- Study Room
- Entertainment Room
- Entrance Hall



Khun.Damrongpol's Residence

Klongsamwa, Bangkok

Scope of service :

- Master Bedroom
- Bedroom
- Dining Room
- Living Area
- Study Room
- Entertainment Room
- Entrance Hall



Khun.Damrongpol's Residence

Klongsamwa, Bangkok

Scope of service :

- Master Bedroom
- Bedroom
- Dining Room
- Living Area
- Study Room
- Entertainment Room
- Entrance Hall



Khun Ohm' Residence

26th Floor Wind Ratchayothin, Bangkok

Interior Budget : 429,000 Baht

Scope of service :

- Bedroom
- Living Room



Khun Ohm' Residence

26th Floor Wind Ratchayothin, Bangkok

Interior Budget : 429,000 Baht

Scope of service :

- Bedroom
- Living Room



Khun Brian's Condominium

Satorn Garden, Bangkok

Interior Budget : 1.9 Million Baht

Scope of service :

- Bedroom
- Walk in closet
- Dining area
- Living area
- Bathroom



Khun Brian's Condominium

Saturn Garden, Bangkok

Interior Budget : 1.9 Million Baht

Scope of service :

- Bedroom
- Walk in closet
- Dining area
- Living area
- Bathroom



Dr. Karndee's Residence

Satorn Garden, Bangkok

Interior Budget : 2.5 Million Baht

Scope of service :

- Master bedroom
- Kids bedroom
- Dining area
- Living area
- Study Room



Dr. Karndee's Residence

Satorn Garden, Bangkok

Interior Budget : 2.5 Million Baht

Scope of service :

- Master bedroom
- Kids bedroom
- Dining area
- Living area
- Study Room

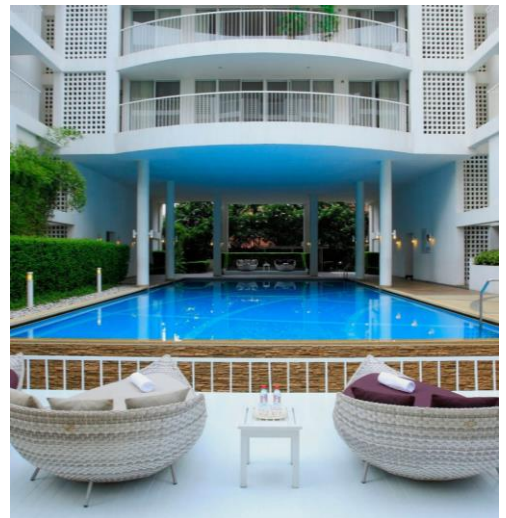
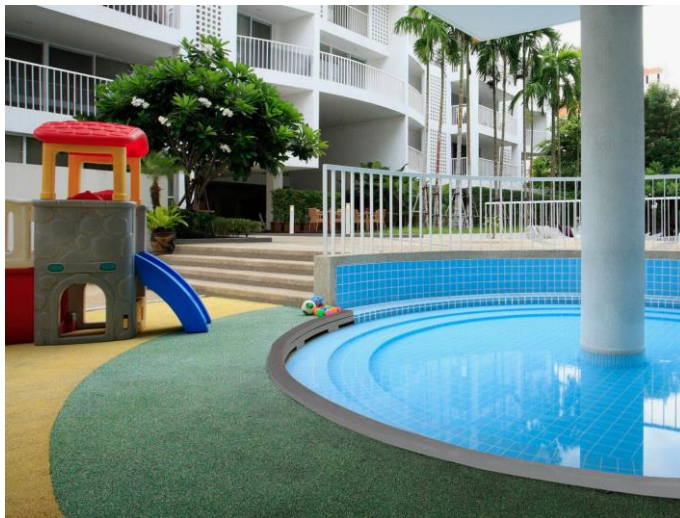


V Condominium

Ladkrabang, Bangkok

Scope of service :

- Conference sale
- Library
- Lift Hall
- Mockup Type A
- Mockup Type B



Ekamai Gardens Phase I&II

Sukhumvit 63, Bangkok

Area: Featuring 46 apartments,
ranging from 160 sqm – 290 sqm

Scope of service :

- Bedroom
- Dining Room
- Living Area
- Meeting Room
- Lobby
- Fitness



Civic Horizon Phase II

Sukhumvit 63, Bangkok

Scope of service :

- Bedroom
- Dining Room
- Living Area
- Bathroom



Civic Horizon Phase II

Sukhumvit 63, Bangkok

Scope of service :

- Bedroom
- Dining Room
- Living Area
- Bathroom