



COMPANY **PROFILE**

THE ART OF SOLUTIONS.
DESIGN TO BE DIFFERENT

BANKING

SHOP & RETAIL

CORPORATE OFFICES

LEARNING CENTER





WVK GROUP is a full-design service company giving services and consulting to clients located in Thailand and abroad. Our design teams made up of designers and staffs who are highly experienced on their specialized skills. Our goal is to deliver the highest potential in design creativity and to develop the best solutions for every client's projects.

OUR SERVICES



Interior Design Lighting Design

WVK Group Co., Ltd. is a full service residential and commercial interior design. Our designers have expertise in local and international high-end architectural design creating beautiful interiors decoration, which reflects client's taste and lifestyle. We coordinate, supervise, and especially find solutions for the design problems to make client's dreams come true.

Our work process is based on analysis and understanding of the client's objectives to create the design reflecting their image, and enhancing their identity that can meet their requirements.

With our professional experiences, we have flexible interior design services providing a wide range of designers; residential, commercial retail units, resort hotels, condominiums, offices, showrooms, museums, restaurants, club houses, and shops, entertainment and beauty centers including all construction sites.

There are mainly 4 stages of interior design:

- ❖ Planning
- ❖ Design Concept
- ❖ Working drawing and specification
- ❖ Site supervision

Interior and Lighting Design Service :

- ❖ Planning by integration of all work for building service and coordination with engineers and other specialists.
- ❖ Preparation of production design, drawing, and details
- ❖ Preparation of specification
- ❖ Selection of all materials and equipment
- ❖ Cost evaluation
- ❖ Provision and selection of contractors
- ❖ Positioning of electrical wiring, water supply, and air-conditioning
- ❖ Site supervision and management



OUR SERVICES

Graphic Design

WVK Group Co., Ltd. is fluent in graphic design.

We serve our clients with every aspect of graphic design services; logo, signage, corporate identity and packaging design. We have our design profile accepted in both domestic and international level. We realize that the value of design can be used to dramatically enhance product image. This helps our clients to compete in their market and eventually attain success in their services, and sales for their companies.

Our experiences in graphic design are creating logo and signage for individuals and corporate; beauty centers, restaurants, spas, shops, land developer and hotels etc. Moreover, we are well - known especially as a specialist in product and packaging design: furniture, consumer packaging design and consumer product design

Industrial Design Service

- ❖ Image Design of Product
- ❖ Plan and Development
- ❖ Conceptual Design and Artwork
- ❖ Product Design and Furniture Design
- ❖ Packaging Design
- ❖ Logo and Signage
- ❖ Displays
- ❖ Editorial Design; Books, Annual Reports, Brochures, and Posters etc.



Wiboon Tiramongkol
Managing Director

Work Experiences

- 2002-Current: Design Team Managing Director -Interior & Lighting Design Dep.,
WVK GROUP Co.,Ltd., Bangkok
- 1999-2002: Lighting Designer, KUGLER TILLOTSON ASSOCIATES Co.,Ltd., New York, USA
- 1992-1996: Self-employed Interior Designer/Manager, KTP Co., Ltd., Bangkok
- 1991-1992: Interior designer, WARANZ DESIGN GROUP Co., Ltd., Bangkok
- 1991: Interior designer, RIFENBURG & RIRKRIT ARCHITECTS, Bangkok

Education

- 2018-2021 Ph.D. in Social Change, BOU Florida, USA
- 2018-2019: Postgraduate Diploma in “Innovation and Design Thinking”
EMERITUS Institute of Management in collaboration with MIT
Management Executive Education, Columbia Business School and
Tuck Executive Education at Dartmouth, USA
- 2005-2007: MBA -Master of Business Administration Executive Program.
CHULALONGKORN UNIVERSITY, Bangkok
- 2000: Advanced Level Diploma, IESNA ED-150, IESNY
[Illuminating Engineering Society-New York], New York, USA
- 1997-1999: M.I.Arch., Master of Interior Architecture, UNIVERSITY OF OREGON, Eugene, Oregon, USA
- 1998: Advanced Level Diploma, Interior Design Program.
MARYLHURST COLLEGE, Oregon, USA
- 1997: Advanced Level Diploma, American English Language and
Culture, LEWIS & CLARK COLLEGE (ISALC), Oregon, USA
- 1987-1991: BA -Bachelor of Arts Degree in Interior Design, SILPAKORN UNIVERSITY, Bangkok

Teaching Experiences

- 2002-Current: Instructor, Decorative of Arts Department (interior design)
for Bachelor and Master degree. SILPAKORN UNIVERSITY, Bangkok
- 2003-Current: Instructor, Architecture Department -Bachelor Degree & Co-Advisor, Architecture
Department - Master Degree THAMMASAT UNIVERSITY, Bangkok
- 2004, 2005, 2007: Instructor, Baan & Suan Training Program, Baan & Suan Magazine AMARIN
PRINTING (PLC), Bangkok

Professional Experiences

2002-Current:: WVK GROUP Co., Ltd. / Wecons & Partner Co.,Ltd

Hospitality Design:

City Hotel / Thailand

- ❖ Rosewood Hotel Bangkok, Ploenchit, Bangkok (Design Collaboration)
- ❖ Millennium Hilton Bangkok, Klongsan, Bangkok (Design Collaboration)
- ❖ Amari Don Muang Airport Bangkok Hotel, Bangkok
- ❖ Centara Grand & Bangkok Convention Centre, CentralWorld, 26th Floor for Fitness Center and Spa, Ratchaprasong, Bangkok
- ❖ Kram Hotel, Pattaya, Chonburi
- ❖ Civighar, Thonglor 13, Bangkok
- ❖ Civic Place, Sukhumvit 63, Bangkok
- ❖ The Novotel Hotel, Siam Square, Bangkok, Executive Guestroom.

City Hotel / Oversea

- ❖ Excellence Hotel, Yangon, Myanmar
- ❖ ACMAR Hotel & Residence, Malaysia
- ❖ Escape Hotel, Loikaw, Myanmar
- ❖ Julia Hotel, Phanompen, Cambodia
- ❖ Callavelle Hotel (Saigon Saigon Bar); Saigon, Vietnam

Resort Hotel / Thailand

- ❖ Centara Grand Beach Resort & Villas Krabi, Phase I,II & III, Krabi
- ❖ Centara Karon Resort Phuket, Karon, Phuket (WIP)
- ❖ Centara Grand Beach Resort Phuket, Renovation of Main Lobby, Patong, Phuket
- ❖ Centara Seaview Resort khao lak, Phang Nga
- ❖ Centara Anda Dhevi Resort & Spa, Ao Nang, Krabi
- ❖ Centara Aonang Beach Resort, Ao Namg, Krabi
- ❖ Centara Huahin, Damnernkasem Rd., Hua Hin, Prachuabkirikhan
- ❖ The Blue Marine Resort & Spa, Phuket; Managed by Centara, Patong, Phuket
- ❖ Koh Yao Yai Village, Koh Yao Yai, Phang-nga
- ❖ The Briza Beach Resort & Spa; Koh Samui, Surat-Thani
- ❖ Sukko Spa & Wellness Center; Phuket
- ❖ Sunsuri Phuket
- ❖ Long Beach Garden Hotel,Pattaya
- ❖ Palmyra Patong Resort, Patong Beach, Phuket
- ❖ Anyavee Beach Resort, Tubkae, Krabi
- ❖ Samui Peninsula Hotel ; Koh Samui, Surat-Thani
- ❖ DASADA Retail Shop and Spa, PrachineBuri
- ❖ The Secret Garden Spa (Cheevajit Healing Center) Rose Garden, Nakornpathom

Resort Hotel / Oversea

- ❖ Le Palais Juliana, Luang Prabang, Laos
- ❖ L'Eau Oure/ Spa, Belgium

Historical Thailand Hotel

- ❖ On-On Hotel, Phuket
- ❖ WOO Boutique Hotel

Corporate Design:

- ❖ DFDL, Mekong Legal & Tax Advisors Co.,Ltd., Silom, Bangkok
- ❖ M Thai at All Seasons Place : Renovation of Corridor & Restroom, All Seasons Place, Wireless Rd., Bangkok
- ❖ Aimgroup Head Quarter, Chachengsao
- ❖ Aimpack Warehouse Office, Kruthekreetha Soi 33, Bangkok
- ❖ Aimpack Bangkok Office, Kruthekreetha Soi 20, Bangkok
- ❖ River Engineering, Ladpraow 64, Bangkok
- ❖ CCL Label Pharse I, Bangpakong, Chachoengsao
- ❖ CCL Label Pharse II, Nikom Well Grow- Samuthprakarn
- ❖ OMG Community Playground, Rama II, Bangkok
- ❖ Save the children, Singapore
- ❖ NED Office Revovation, Khok Samrong, Lopburi
- ❖ NEC, Thaniya Building, Silom, Bangkok
- ❖ NEC Logistic (Thailand) Co., Ltd.; Silom, Bangkok
- ❖ SIM Consultant Co.,Ltd., Thonburi, Bangkok
- ❖ Popidols Co., Ltd., Asoke Tower, Sukhumvit Rd., Bangkok
- ❖ Thaniya Plaza, Lobby G. Floor Renovation ; Silom, Bangkok
- ❖ Alconix (Thailand) Ltd. ; Silom, Bangkok
- ❖ Otto Group (Thailand) Co., Ltd. ; Phase I ,Silom, Bangkok
- ❖ Save The Children UK, Maniya Center Building, Ploenchit Rd., Bangkok

Corporate Design & Turnkey:

- ❖ DFDL (Thailand) Ltd. Rajanakarn Building, Sathon Rd. Bangkok
- ❖ C asean, Dream office 14A floor, Cyber World Tower, Bangkok
- ❖ True Corporation Public Company Limited. 18th-19th Floor, AIA Capital Center, Bangkok
- ❖ FPG Insurance (Thailand) Office, 16th Floor Thaniya Plaza Building, Bangkok
- ❖ THAI S.A. INTER-PRODUCT Company Limited. 19th Floor, Sathorn Square, Silom, Bang Rak, BKK
- ❖ Armajaro Singapore Pte Ltd., Boonmitr Building, Bangkok
- ❖ EYC,Tisco Tower, North Sathorn Rd., Bangkok
- ❖ ELKEN (Thailand) Ltd., Jasmine City Building, Bangkok
- ❖ HANA Corporate Office, Ayutthaya, Thailand
- ❖ Natural Energy Development Office, Lopburi
- ❖ SRUP ANAN PLASTIC Offiec, Poojaosmingprai road, Smutprakarn
- ❖ Enerfo Corporation Office, Silom, Bangkok

Learning Space Interior Design:

- ❖ MBA CU – NGO HOK, Chulalongkorn University
- ❖ 50 Years Anusorn Building, Chulalongkorn University
- ❖ Thammasart Office, Phatumthani
- ❖ ICT & Library, Bangneaw, City of Phuket
- ❖ Renovation of Chulalongkorn Business School, Ph. 2 Professor's 13 Rooms
Ph. 3 CBS Classrooms Chulalongkorn University, Bangkok
- ❖ Enconcept E-Academy, Khonkain / Pinkrow, Bangkok Musuem Design:
- ❖ InsightKIDs, Paradise Park, Bangkok
- ❖ Boston Bright, Silom Soi1
- ❖ Boston Bright, Chamchuri Square
- ❖ Energy Museum, Chiang mai
- ❖ Soil Museum, Land Development Department, Bangkok
- ❖ Angkor National Museum: Siem Reap, Cambodia (Design Collaboration)
- ❖ Stamp Museum, Post and Telegraph Department, Bangkok

Learning Space Interior Design & Turnkey:

- ❖ Energy Learning Centre Phase I, Ban Chang, Rayong
- ❖ WeLearn, Maneeya Center, Ploenchit Rd, Bangkok

Residential Design :

- ❖ Manick Hill Villa, Phuket
- ❖ Khun. Erna's Residence, Phuket
- ❖ Khun. Tom's Condominium, Abstract Condominium, Bangkok
- ❖ Mr. Olaf's Condominium, The River, Bangkok
- ❖ Khun. Damrongpol's Residence, Klongsamwa, Bangkok
- ❖ Khun. Ohm's Residence, 26th Fl., Wind Ratchayothin, Bangkok
- ❖ Khun. Brian's Condo, Sathorn Gardens, Bangkok
- ❖ Dr.Karndee's Residence, Soi ABC Bang Kapi, Huai Khwang, Bangkok
- ❖ V Condominium, Ladkrabang, Bangkok
- ❖ Ekamai Gardens I&II, Ekamai, Bangkok
- ❖ Civic Horizon Tower- Serviced Apartment, Sukhumvit 63, Bangkok(WIP)
- ❖ Civic Park (additional work)-Serviced Apartment, Thonglor 13, Sukhumvit 55,Bangkok
- ❖ Khun. Manit's Condominium, Veranda Residence, Pattaya
- ❖ Khun. Nini's Residence, Lumpini, Bangkok
- ❖ Khun. Vayu's Residence, Ban Klang Mueng Ratchada, Bangkok
- ❖ Dr.Wilert's Residence, Chamchuri Square Residence, Phatumwan, Bangkok
- ❖ Dr.Karndee's Residence, Satorn Garden, Bangkok
- ❖ Khun. Urarom's Condominium, Lumpini River Side, Bangkok
- ❖ Lerdlumampun Residence,
- ❖ Leekanchanakorn Residence, Cha-am, Petchaburi
- ❖ Uahwatanasakul Residence, 23rd Floor, the Lakes Bldg. Bangkok
- ❖ Patra- Yanan Residence, Nichada Thani, Bangkok
- ❖ Lamatipanont Residence, Phutamonthon Sai 2, Bangkok

Retail & Showroom Design :

- ❖ Yatanarpon Shopping Mall, Yangon, Myanmar
- ❖ PTT Petrol Station, Prachinburi
- ❖ Practika Showroom At Saimai and Centralworl, Bangkok
- ❖ True Coffee & True Shop, Siam square Soi 3, Bangkok
- ❖ Shino Shell Park & Plaza, Phuket
- ❖ VP. GEMS, Suratthani
- ❖ Dilavie Shop Hua-Hin, The mall Korat, Terminal 21 Korat
- ❖ Dilavie Shop, Hat Yai, Central Pinklao, Central Rama2, Bangkok, Mega Bangna, Salaya, Fashion Island, Phuket, Central Ladpraow, Khonkhen, Ubon
- ❖ PSC Showroom Willington Ratchada, Bangkok
- ❖ SALIOT Showroom, Porsche Centre Pattanakarn Building, Bangkok
- ❖ Dr. Somchai Shop, Central Pinklao, Bangkok
- ❖ Sangdomrong Kitchenware Center, Amper Muang, Phuket
- ❖ Sony Store, EmQuartier Sukhumvit 35, Bangkok
- ❖ Sony Shop , Siam Paragon, Bangkok
- ❖ Maneeekram Cafe, Phuket
- ❖ Maneeekram Duty Free, Phuket
- ❖ Trendy Day Retail Shop, Ekamai Gateway, Bangkok
- ❖ Eye Bright, Royal Garden Plaza, Pattaya
- ❖ The Horizon Mall, Sukhumvit 63, Bangkok
- ❖ Trez Jewelry, Siamparagon Department Store, Bangkok
- ❖ Seara (Sports Engineering And Recreation Asia Ltd.), Thonglor, Bangkok
- ❖ Cocoon Shop; New York, U.S.A.
- ❖ Home Au Fait, Phnom Penh, Cambodia
- ❖ Mekong Bank- Executive Lounge, Siem Reap Cambodia
- ❖ D' MOUJ Shop, ANM Cultural Mall, Siem Reap Cambodia
- ❖ Neang Mliss, ANM Cultural Mall, Siem Reap Cambodia

Retail & Showroom Design & Turnkey :

- ❖ True Lifestyle Retail Co.,Ltd. 1st floor Digital Gateway, Siam Square, Bangkok
- ❖ True Distribution & Sales 2nd & 3rd floor Digital Gateway, Siam Square, Bangkok
- ❖ True Incube 4th floor Digital Gateway, Siam Square, Bangkok
- ❖ True Coffee & True Shop, Siam square Soi 2, Bangkok
- ❖ True Coffee & True Shop, Chamchuri Square, Bangkok

Restaurant Design :

- ❖ Café 1912, Alliance française de Bangkok, Wireless Road, Bangkok
- ❖ Fong Kum Restaurant, Chinatown WestEnd, Salaya, Nakhon Pathom
- ❖ Pancake Café, Nawamin Avenue and The Circle Ratchapruek, Bangkok
- ❖ Play Station, I'm Park Samyan, Bangkok
- ❖ Beccofino Italian Restaurant and Grill , 55th Plaza , Sukhumvit 55, Bangkok,
- ❖ Coconut Grill & Bar, Phi Phi Island Village, Phuket
- ❖ Bussaracum, Sri Wiang Silom, Bangkok
- ❖ Le petit zinc I, Sukhumvit ,Bangkok
- ❖ Le petit zinc II , Yenargard Road,Bangkok
- ❖ Bunfe' The Coffee Bar & Bistro, Surawong, Bangkok
- ❖ Miss Zara, Krabi
- ❖ Ananda Restaurant, Tokyo, Japan

Healthcare Design :

- ❖ Promjai Dental Clinic, Patong Beach, Phuket
- ❖ Dent Smile, Pattanakarn Soi 30, Bangkok
- ❖ Thaniya Dental Clinic, Silom Road, Bangkok
- ❖ Bangkok International Dental Center, Siam Square, Bangkok
- ❖ Bangkok International Dental Center, Ratchada, Bangkok
- ❖ Thaniya Beauty Center, Silom Road, Bangkok
- ❖ BE PROUD Clinic, Sukhumvit 101, Bangkok
- ❖ B Balance Clinic, Sukhumvit 63 (Ekkamai), Bangkok

1999-2002 : KUGLER TILLOTSON ASSOCIATES CO., LTD.

- ❖ Marriott Marquis 8th Fl.Atrium Renovation; New York. USA
- ❖ Seattle Central Public library ; Seattle, WA, U.S.A.
- ❖ Abercrombie & Fitch Headquarters Campus; U.S.A.
- ❖ American Insurance Group [AIG] Tower Hong Kong
- ❖ New York University, School of Law, New York, USA
- ❖ Shlumberger, Citicorp Center; New York, U.S.A.
- ❖ SFX Headquarters; New York, U.S.A.
- ❖ Bank of China; Beijing, China
- ❖ Feirstein Capital; New York, U.S.A.
- ❖ Publicist Headquarters; New York, U.S.A.
- ❖ Booklyn Public Library, Children Reading Room; Brooklyn, NY U.S.A.
- ❖ Gottesman Exhibition Hall, NY Public Library; NY, U.S.A.
- ❖ Prada Stores; New York, U.S.A.
- ❖ Prada Stores; San Francisco, CA, U.S.A.

Award :

Honorable Mention Award from IIDA for Hospitality Category



MUSEUM / BANK / INSTITUTION & LEARNING CENTER DESIGN

We communicate Value
with Creativity & Innovation

- Interior / Architecture Design
- Lighting Design
- Graphic Design
- Design Collaboration



International / Local Banking Design Project



International / Local Institute Design Project



Bank of China

Beijing, China

Collaboration with Kugler Tillotson Associates Co., Ltd.

Total Budget : xxx

Scope of service :

- Interior Design
- Lighting Design



ICBC

工銀 泰国(租赁)

บริษัท ลิซซีจีเอสบี (ไทย) จำกัด

HEAD OFFICE

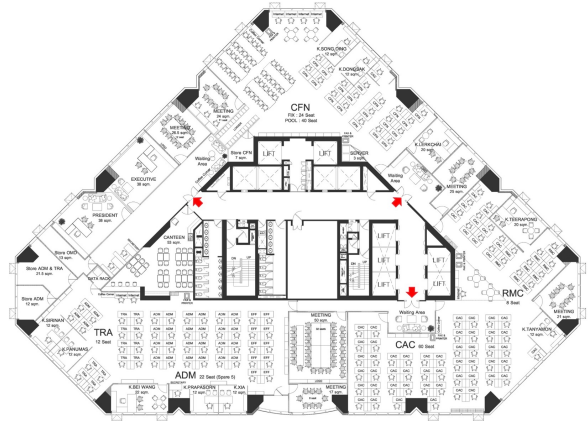
ICBC (Thai) LEASING PROJECT

ICBC Leasing Bank Headquarter

Ground Floor, All Seasons Place M Tower, Wireless Rd. Bangkok

Scope of service :

- Banking Zone
- Interior Design



BEFORE



AFTER



ICBC

工銀泰 (租賃)

บริษัท ลีสซิ่งอสังหาริมทรัพย์ (ไทย) จำกัด

HEAD OFFICE
ICBC (Thai) LEASING PROJECT

ICBC Leasing Bank Headquarter

42nd-43rd Floor, All Seasons Place M Tower, Wireless Rd. Bangkok

Scope of service :

- Banking Zone
- Executive Office & Board Meeting Rooms
- Interior Design



Government Saving Bank (GSB)

Sammakorn Place Ratchaphruek, Bangkok

Scope of service :

- Banking Zone
- Interior Design

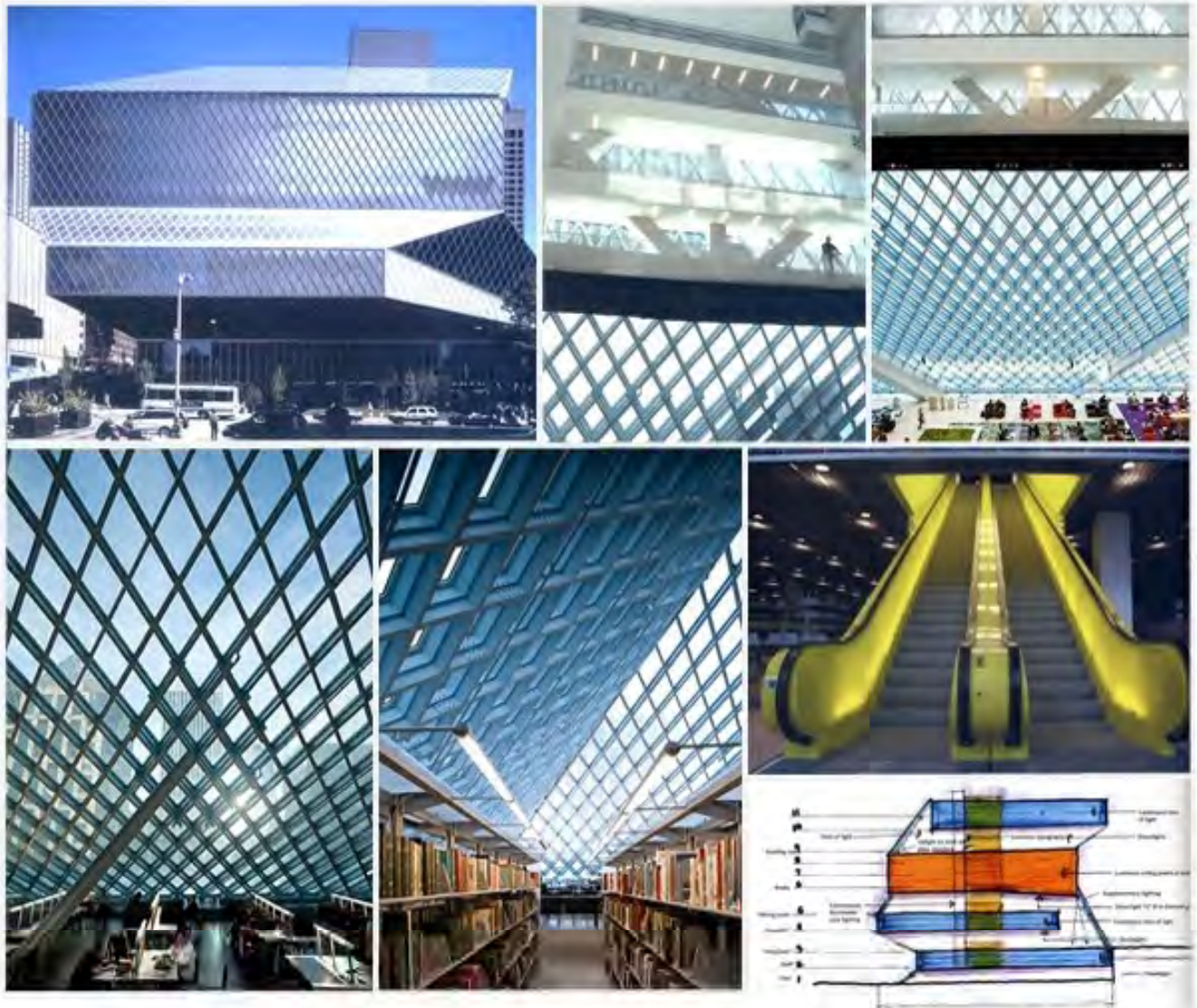


Government Saving Bank (GSB)

Sammakorn Place Ratchaphruek, Bangkok

Scope of service :

- Banking Zone
- Interior Design



The Seattle Public Library

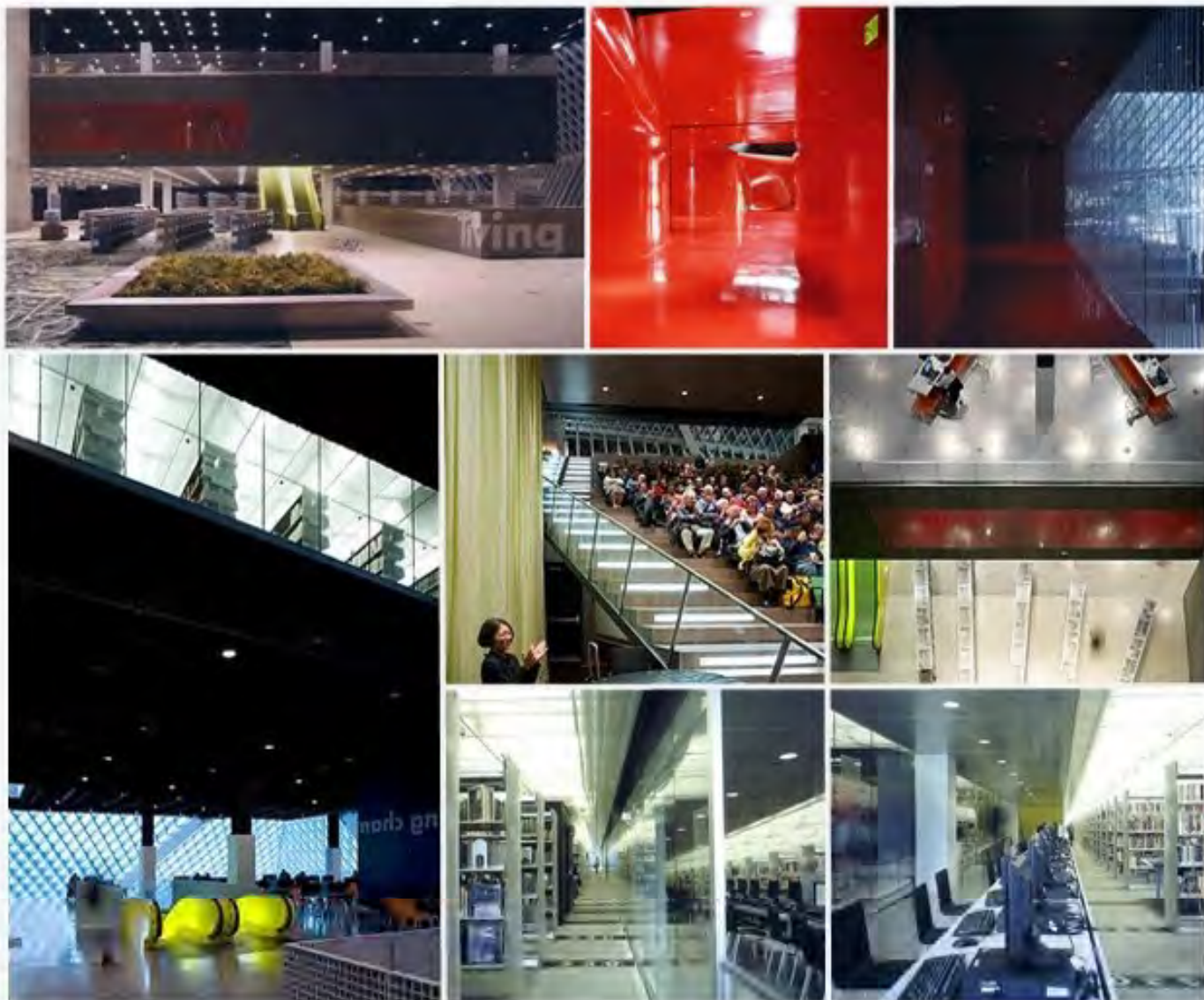
Seattle WA, U.S.A.

Collaboration with Kugler Tillotson Associates Co., Ltd.

Total Budget : xxx

Scope of service :

- 11 Story Library Building
- Seminar Room
- Reading Room
- Kids' Room



The Seattle Public Library

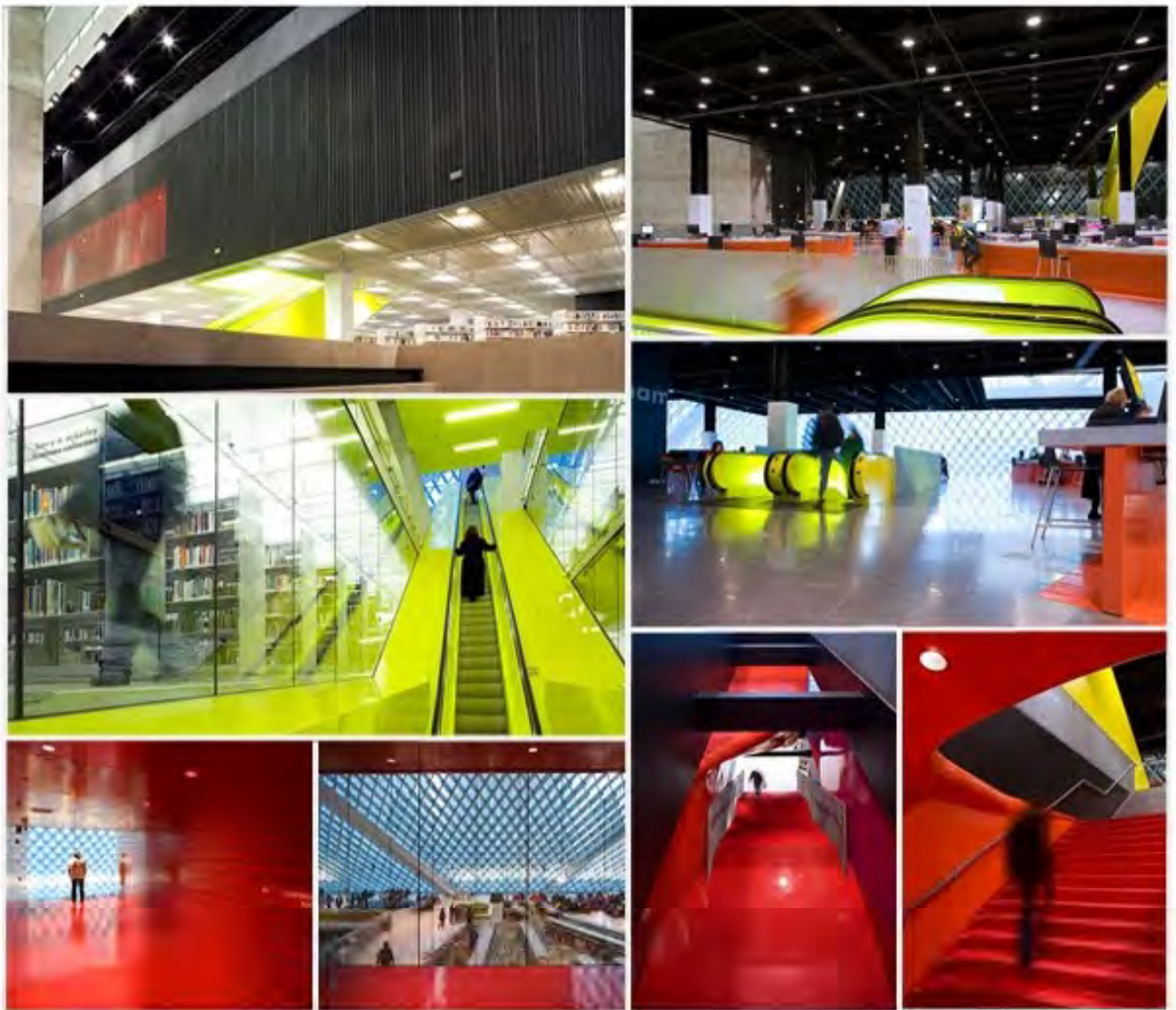
Seattle WA, U.S.A.

Collaboration with Kugler Tillotson Associates Co., Ltd.

Total Budget : xxx

Scope of service :

- 11 Story Library Building
- Seminar Room
- Reading Room
- Kids' Room



The Seattle Public Library

Seattle WA, U.S.A.

Collaboration with Kugler Tillotson Associates Co., Ltd.

Total Budget : xxx

Scope of service :

- 11 Story Library Building
- Seminar Room
- Reading Room
- Kids' Room



Angkor National Museum

Siemreap, Combodia

Total Budget : xxx Millions Baht

Scope of service :

- Museum

Design Collaboration with CMO Organizer (PLC)



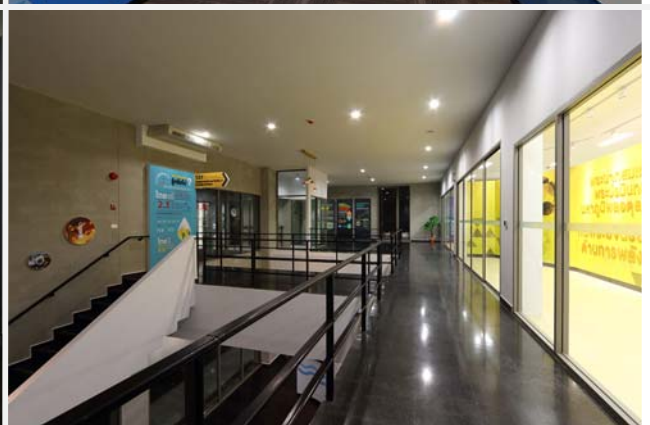
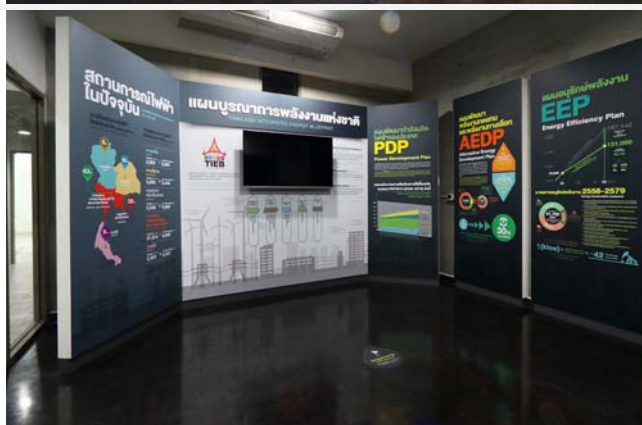
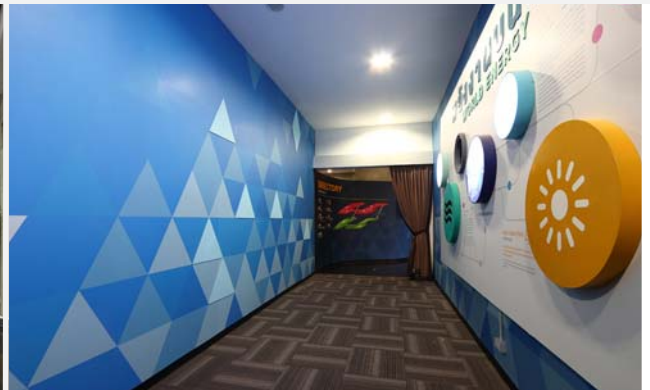
Energy Learning Center

Phla beach, Rayong

Total Budget : 7.89 Millions Baht

Scope of service :

- Reception area
- Movie Theater
- Exhibition Section : 4 Sections
- Cafe



Energy Learning Center

Phla beach, Rayong

Total Budget : 7.89 Millions Baht

Scope of service :

- Reception area
- Movie Theater
- Exhibition Section : 4 Sections
- Cafe



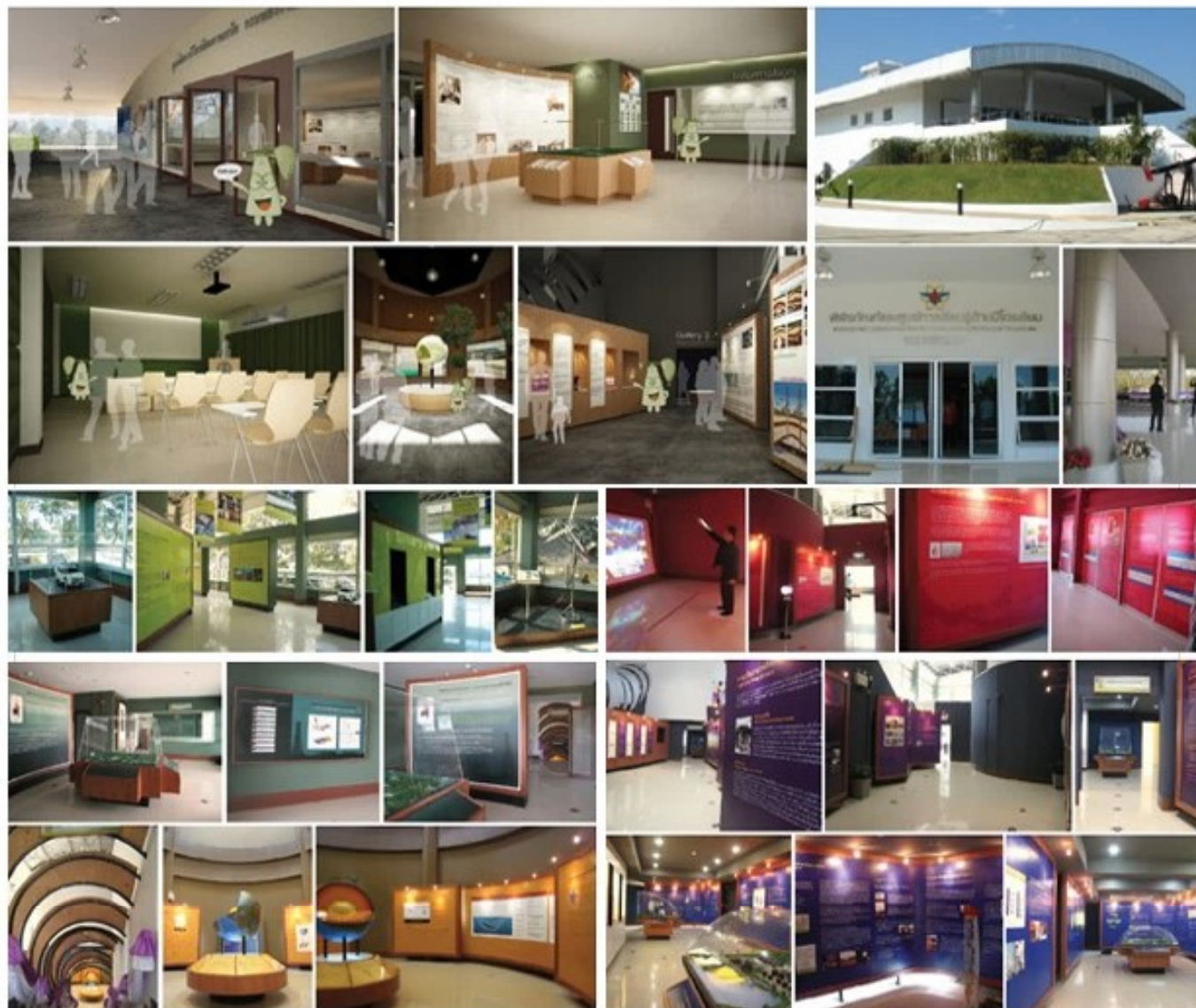
Energy Learning Center

Phla beach, Rayong

Total Budget : 7.89 Millions Baht

Scope of service :

- Reception area
- Movie Theater
- Exhibition Section : 4 Sections
- Cafe



Museum and Learning Center for Knowledge in Petroleum Technology

Chiangmai, Thailand

Total Budget : xxx

Scope of service :

- Museum



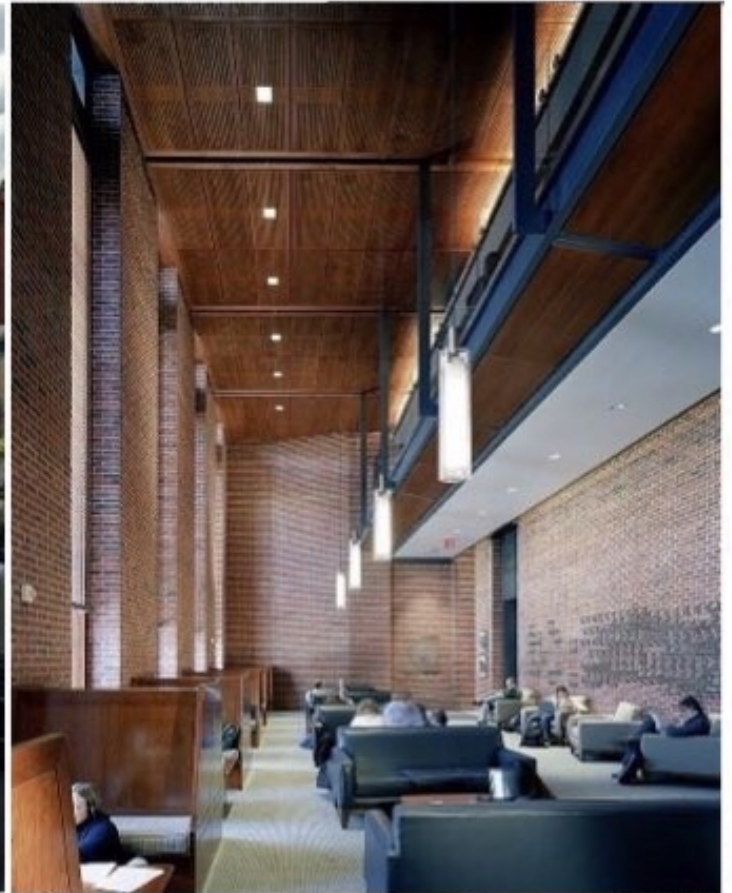
Soil Museum

Land Development Department, Bangkok

Total Budget : xxx Millions Baht

Scope of service :

- Museum



New York University School of Law

Furman Hall, New York, NYC USA

Collaboration with Kugler Tillotson Associates Co., Ltd.

Total Budget : xxx

Scope of service :

- 9 Story Library Building
- Seminar Room
- Conference Room
- Meeting Rooms
- Faculty & Staff Areas
- Student's Lounge
- Entry Hall & Mezzanine Floor



MBA CU – NGO HOK

Chulalongkorn University, Bangkok

Interior Budget : 3.9 Millions Baht

Scope of service :

- Lecture room



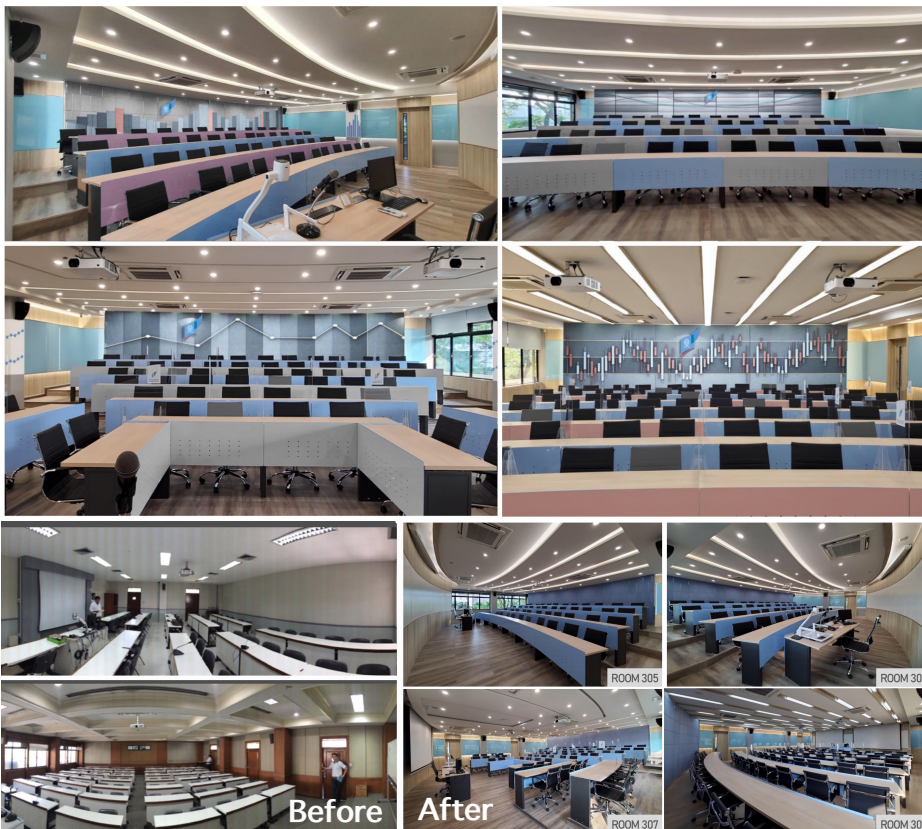
50 Years Anusorn Building

Chulalongkorn University, Bangkok

Total Budget : 18.5 Millions Baht

Scope of service :

- Classroom S, M, L



**CBS
ACADEMY**
CHULALONGKORN BUSINESS SCHOOL

50 Years Anusorn Building Chulalongkorn University, Bangkok

Total Budget : 18.5 Millions Baht

Scope of service :

- Classroom S, M, L

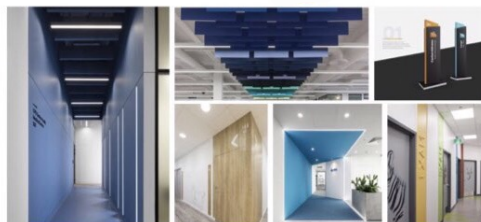


Existing Condition



CHULALONGKORN
BUSINESS SCHOOL

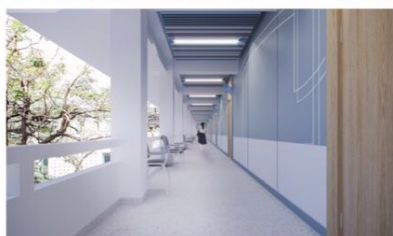
MOOD & TONE
CORRIDOR



EXISTING



PEF
CORRIDOR



Existing Condition



**CBS
ACADEMY**

CHULALONGKORN BUSINESS SCHOOL

50 Years Anusorn Building

Chulalongkorn University, Bangkok

Total Budget : 18.5 Millions Baht

Scope of service :

- Classroom S, M, L
Corridor & Lift Hall



Library_Bangneaw

Phuket

Total Budget : xxx

Scope of service :

- Library
- Reading Room
- Kids' Room



ICT_Bangneaw

Phuket

Total Budget : xxx

Scope of service :

- Corridor
- ICT library



Sam Sen Nai Philatelic Museum

Sam Sen Nai, Bangkok



Total Budget : xxx

Scope of service :

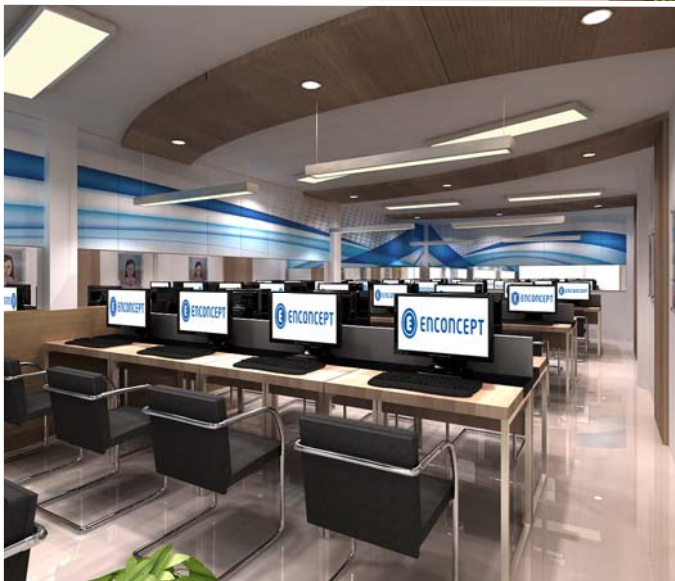
- Museum



International / Local Learning Center Design Projects



International / Local Healthcare Design Projects

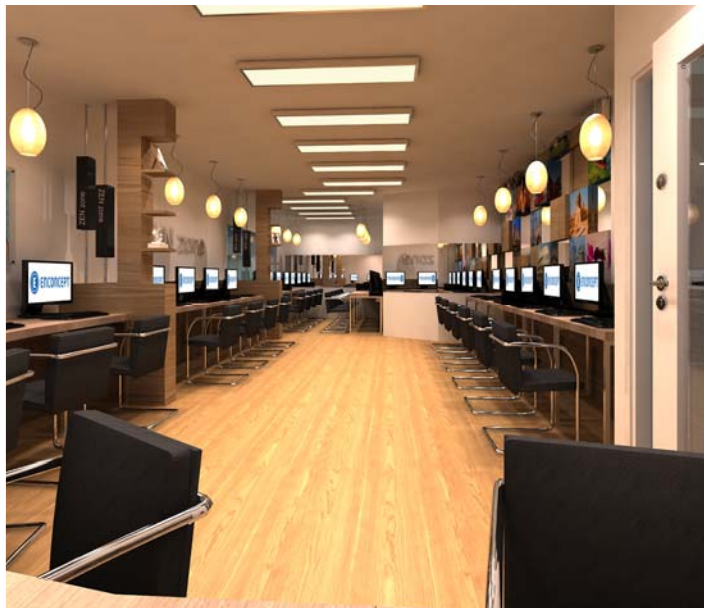


Enconcept E-Academy

Total Budget : xxx

Scope of service :

- Interior Design



Enconcept E-Academy

Total Budget : xxx

Scope of service :

- Interior Design



Inside Kids

Paradise Park, Bangkok

Total Budget : 1 Millions Baht

Scope of service :

- Reception area
- Front area
- Reading corner
- Classroom



B Boston Bright
Language School

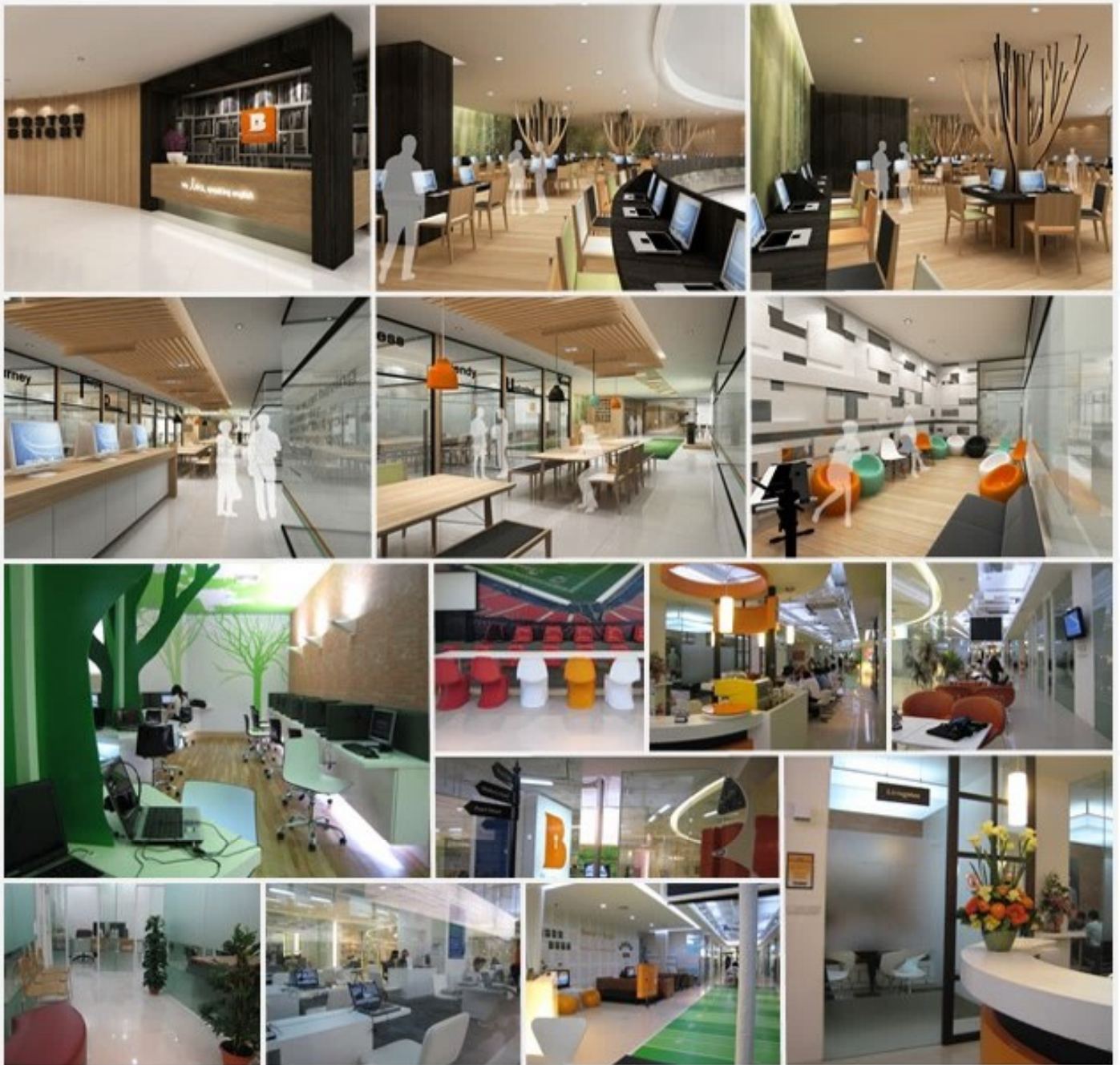
Boston Bright

Silom Soi.1, Bangkok

Total Budget : 6.63 Millions Baht

Scope of service :

- Reception area
- Front area
- Activity room
- Relax area
- Façade
- W/C



Boston Bright

Chamchuri Square, Bangkok

Total Budget : 5.53 Millions Baht

Scope of service :

- Back of house
- Study Room
- Sale Room
- Activities Zone (Public Area)
- Park Room



Welearn

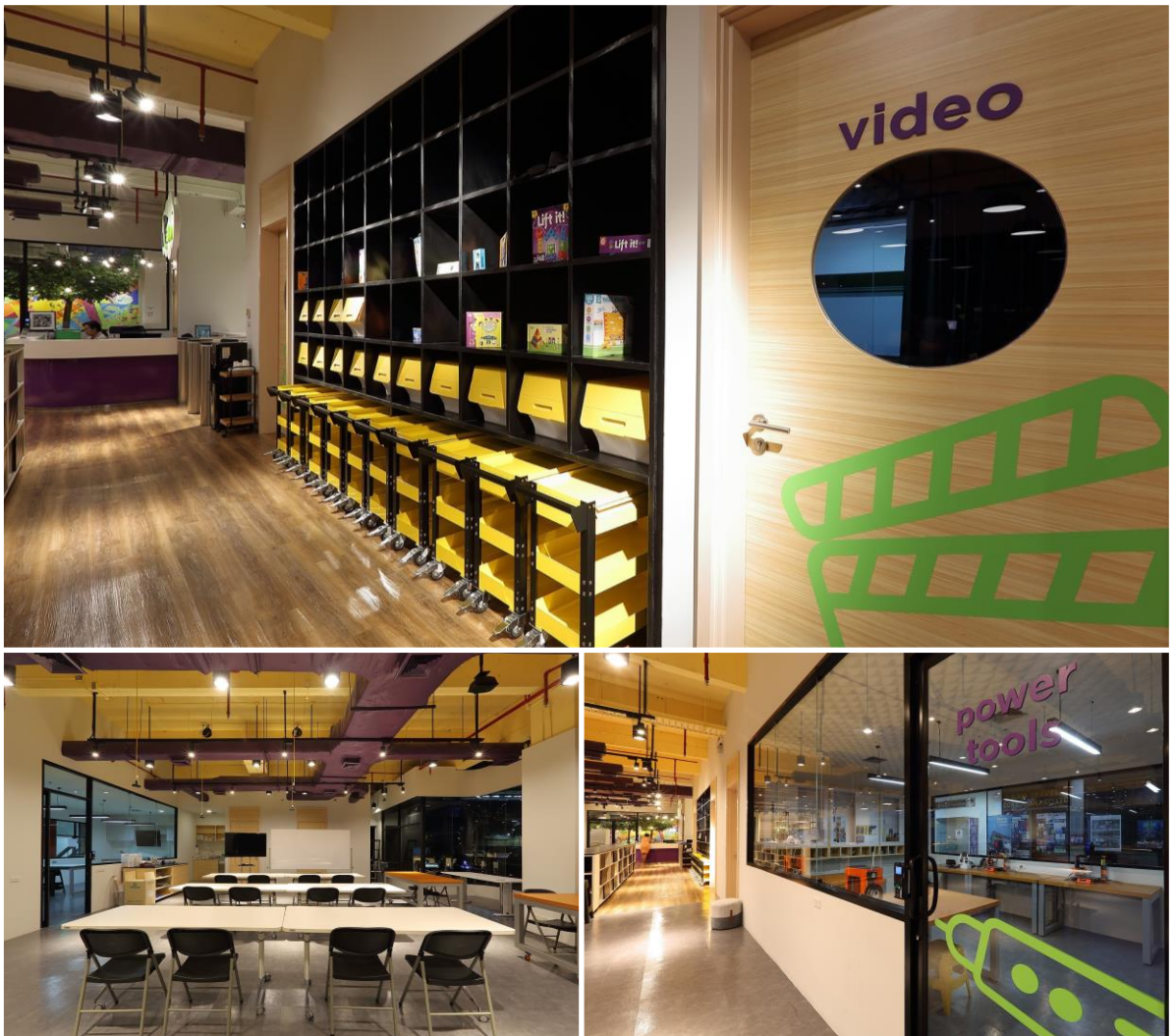
Maneeya Center, Ploenchit Road, Bangkok

Interior Budget : 9.52 Millions Baht

Area : 765.70 Sq.m

Scope of service :

- Study Space
- Maker Space (Innovation & STEAM Space)
- Showroom / Auditorium
- Café



Welearn

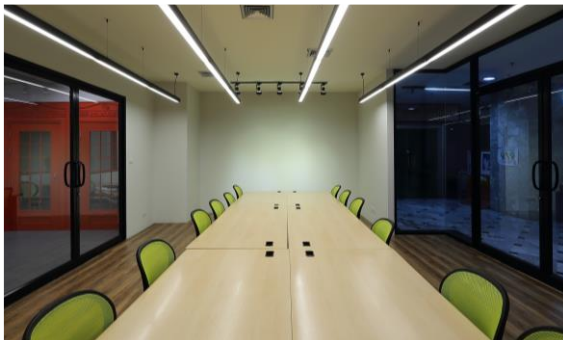
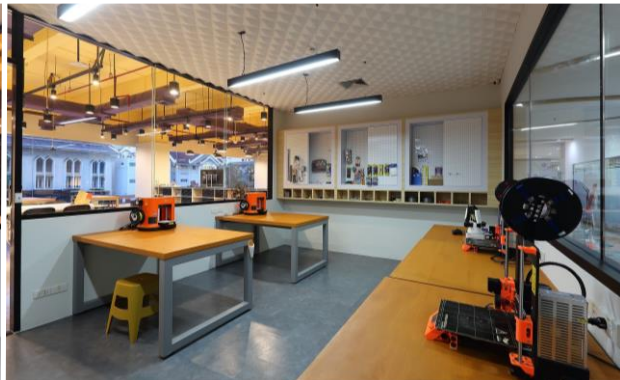
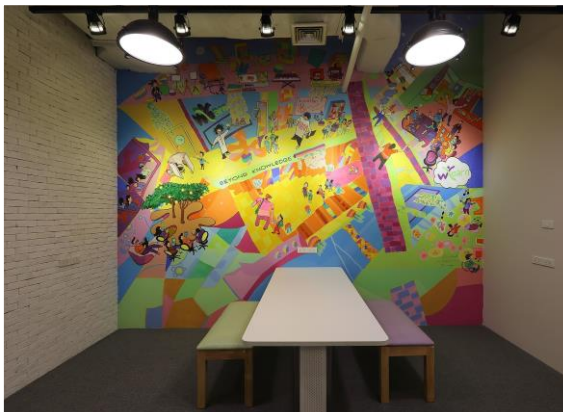
Maneeya Center, Ploenchit Road, Bangkok

Interior Budget : 9.52 Millions Baht

Area : 765.70 Sq.m

Scope of service :

- Study Space
- Maker Space (Innovation & STEAM Space)
- Showroom / Auditorium
- Café



Welearn

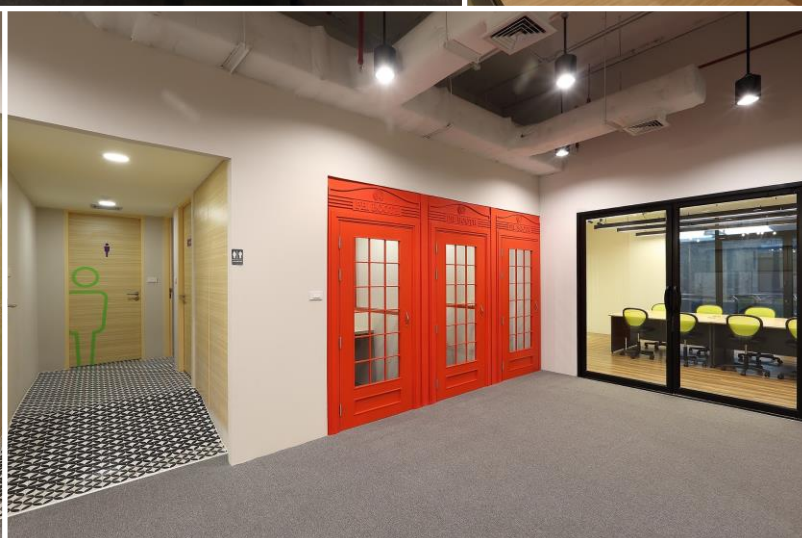
Maneeya Center, Ploenchit Road, Bangkok

Interior Budget : 9.52 Millions Baht

Area : 765.70 Sq.m

Scope of service :

- Study Space
- Maker Space (Innovation & STEAM Space)
- Showroom / Auditorium
- Café



Welearn

Maneeya Center, Ploenchit Road, Bangkok

Interior Budget : 9.52 Millions Baht

Area : 765.70 Sq.m

Scope of service :

- Study Space
- Maker Space (Innovation & STEAM Space)
- Showroom / Auditorium
- Café



OMG!

Community Playground, Rama II

Total Budget : 70 Millions Baht

Scope of service :

- Lobby & Reception Area
- Fitness & Yoga Rooms
- OMG! Restaurant
- Badminton Courts
- VIP Lounge
- Relaxation Room
- Locker Rooms



OMG!

Community Playground, Rama II

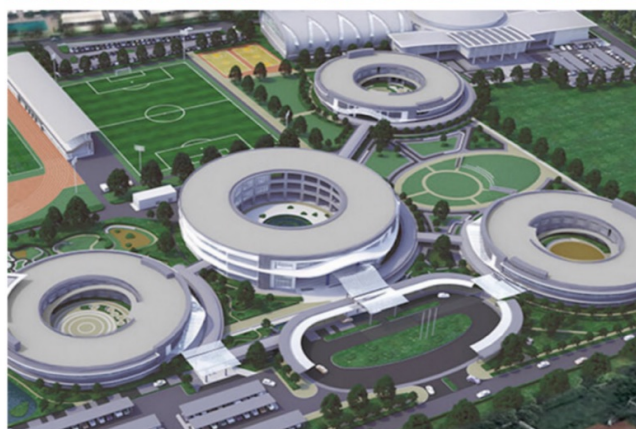
Total Budget : 70 Millions Baht

Scope of service :

- Lobby & Reception Area
- Fitness & Yoga Rooms
- OMG! Restaurant
- Badminton Courts
- VIP Lounge
- Relaxation Room
- Locker Rooms



Arch.by
Palmer & Turner (Thailand) Ltd



Collaborated with "August Design Consultant Co., Ltd."

Verso International School

198, Moo 4, Soi Sarasetthasiri, Suvarnabhumi 3 Road
Bangchalong Sub-district, Bang Plee District, Samut Prakan 10540

Scope of service :

- Signage/ Directory Design
- Interior Development/ Productions for Bidding & Construction Packages in Hub/ Middle Loop/ Stadium Buildings



Collaborated with "August Design Consultant Co., Ltd."

Verso International School

198, Moo 4, Soi Sarasetthasiri, Suvarnabhumi 3 Road
Bangchalong Sub-district, Bang Plee District, Samut Prakan 10540

Scope of service :

- Signage/ Directory Design
- Interior Development/ Productions for Bidding & Construction Packages in Hub/ Middle Loop/ Stadium Buildings



Collaborated with "August Design Consultant Co., Ltd."

Verso International School

198, Moo 4, Soi Sarasetthasiri, Suvarnabhumi 3 Road
Bangchalong Sub-district, Bang Plee District, Samut Prakan 10540

Scope of service :

- Signage/ Directory Design
- Interior Development/ Productions for Bidding & Construction Packages in Hub/ Middle Loop/ Stadium Buildings



CORPORATE & OFFICE DESIGN

We communicate Value
with Creativity & Innovation

- Interior / Architecture Design
- Lighting Design
- Graphic Design
- Design Collaboration



International / Local Corporate Design Projects



International / Local Corporate Identity Design Projects



Save The Children

Singapore

Interior Budget : - Millions Baht

Scope of service :

- Reception Area
- Meeting Room
- Working Area



Schlumberger

Schlumberger

New York, U.S.A

Collaboration with Kugler Tillotson Associates Co., Ltd.

Total Budget : xxx

Scope of service :

- Café
- Working Space
- Meeting Room



Feirstein Capital

New York, U.S.A

DESIGN COLLABORATION
WITH KUGLER TILLOTSON ASSOCIATES CO., LTD.

Scope of service :

- Reception
- Elevator Hall
- Conference Room
- Open Management Office
- Executive Office



PUBLICIS

Publicis

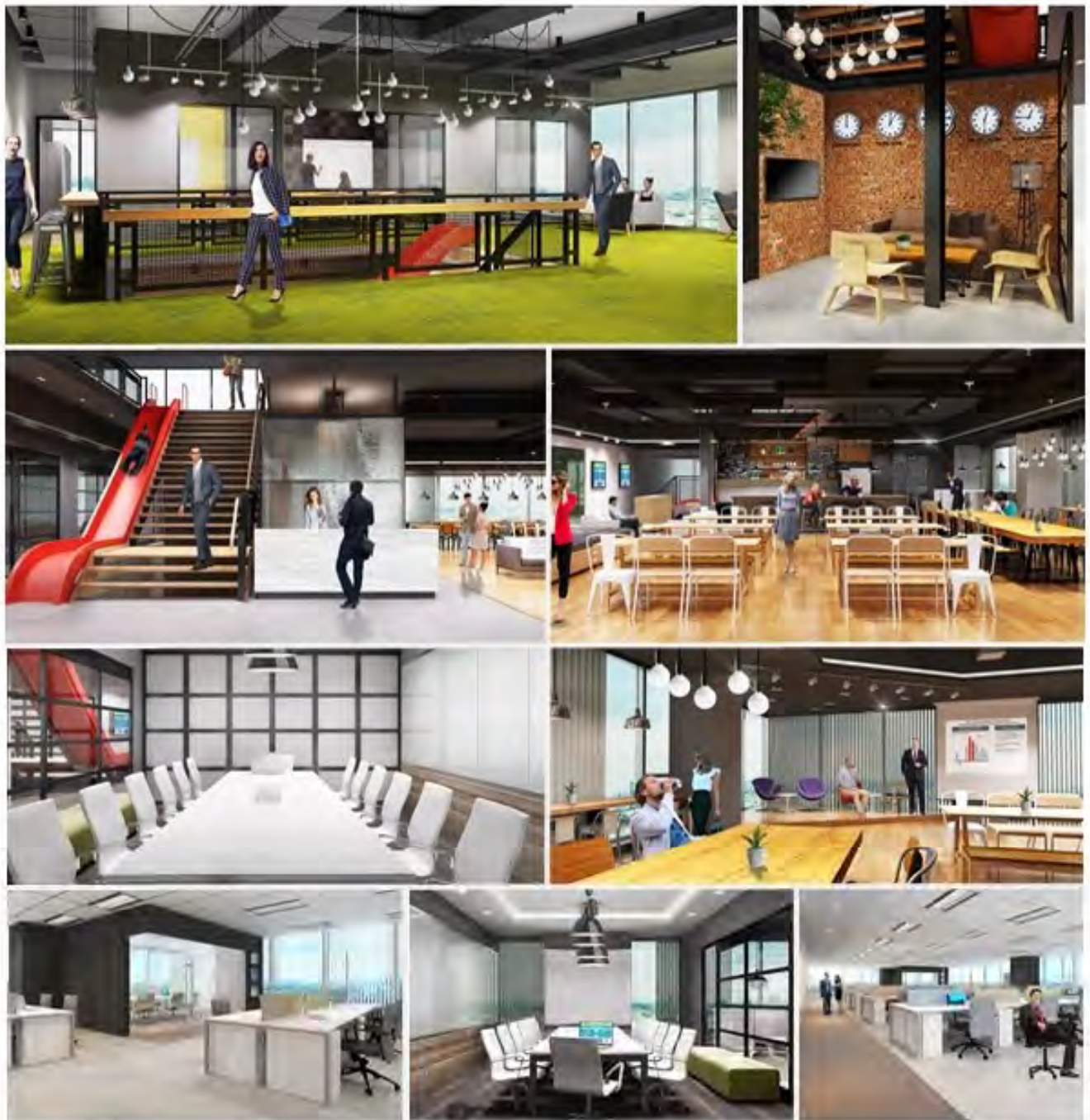
New York, U.S.A.

Collaboration with Kugler Tillotson Associates Co., Ltd.

Total Budget : xxx

Scope of service :

- Reception Area
- Open Workspace



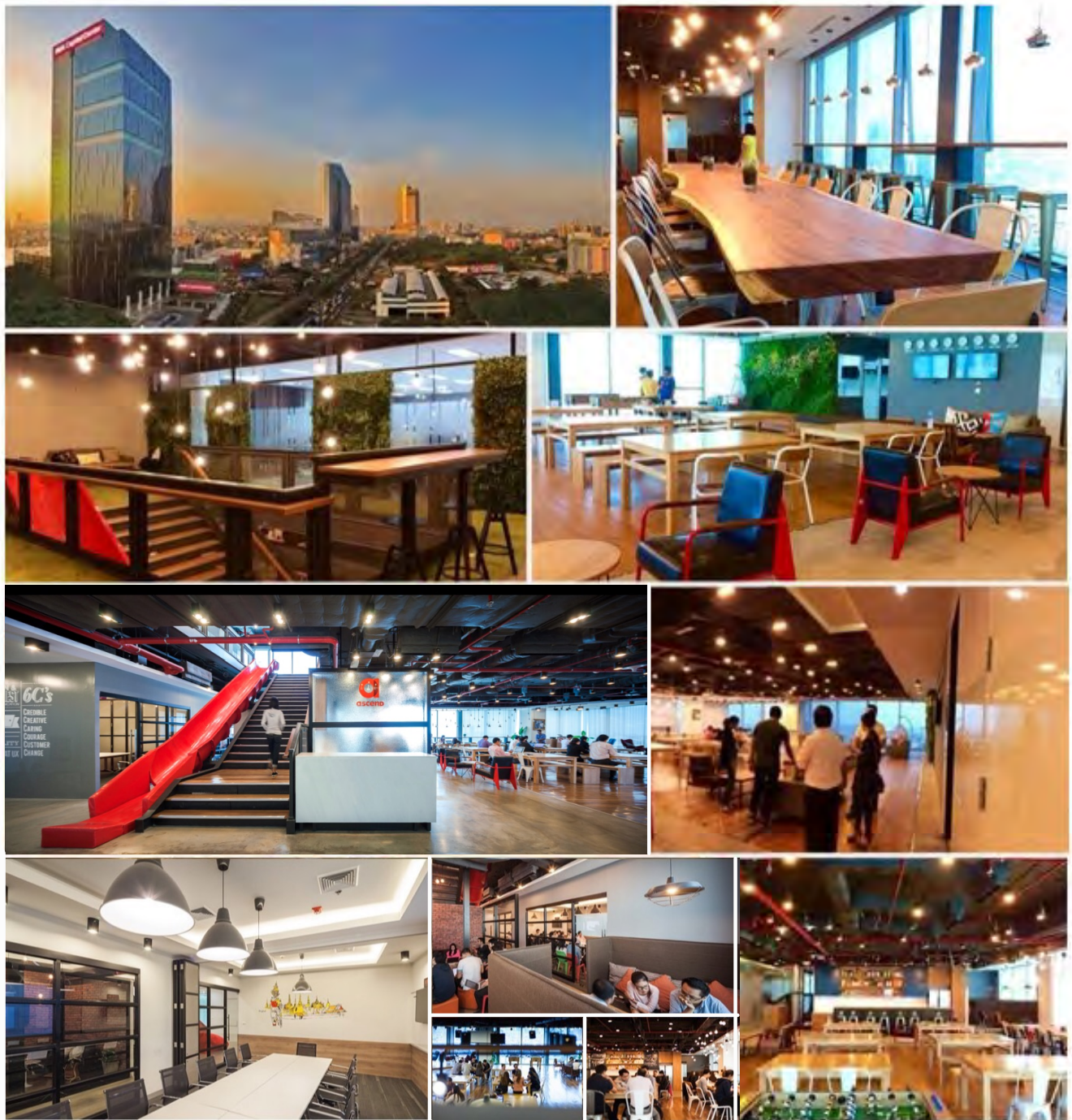
true

True Corporation Public Company Limited
AIA Capital Center, Bangkok

Total Budget : 24 Million Baht.

Scope of service :

- 18 Fl. and 19 Fl.
 - Town hall
 - Open space office
 - Executive office
 - Canteen / Pantry
 - Storage room
 - Break out areas
 - Photo studio
 - Stair Hall
 - Meeting rooms



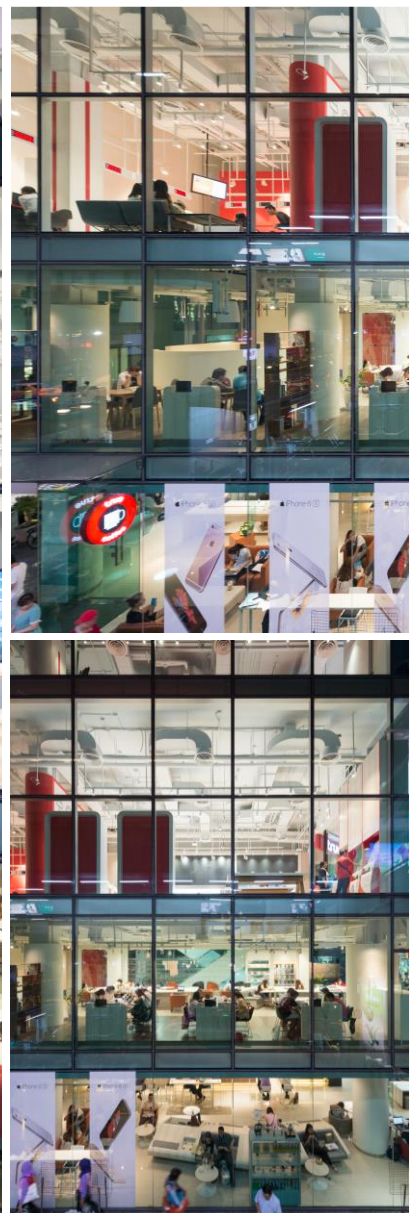
true

True Corporation Public Company Limited
AIA Capital Center, Bangkok

Total Budget : 24 Million Baht.

Scope of service :

- 18 Fl. and 19 Fl.
 - Town hall
 - Open space office
 - Executive office
 - Canteen / Pantry
 - Storage room
 - Break out areas
 - Photo studio
 - Stair Hall
 - Meeting rooms



true

True Distribution & Sale

Digital Gateway, Siam Square, Bangkok

Total Budget : 5.6 Million Baht.

Scope of service :

- Counter services & sales



true

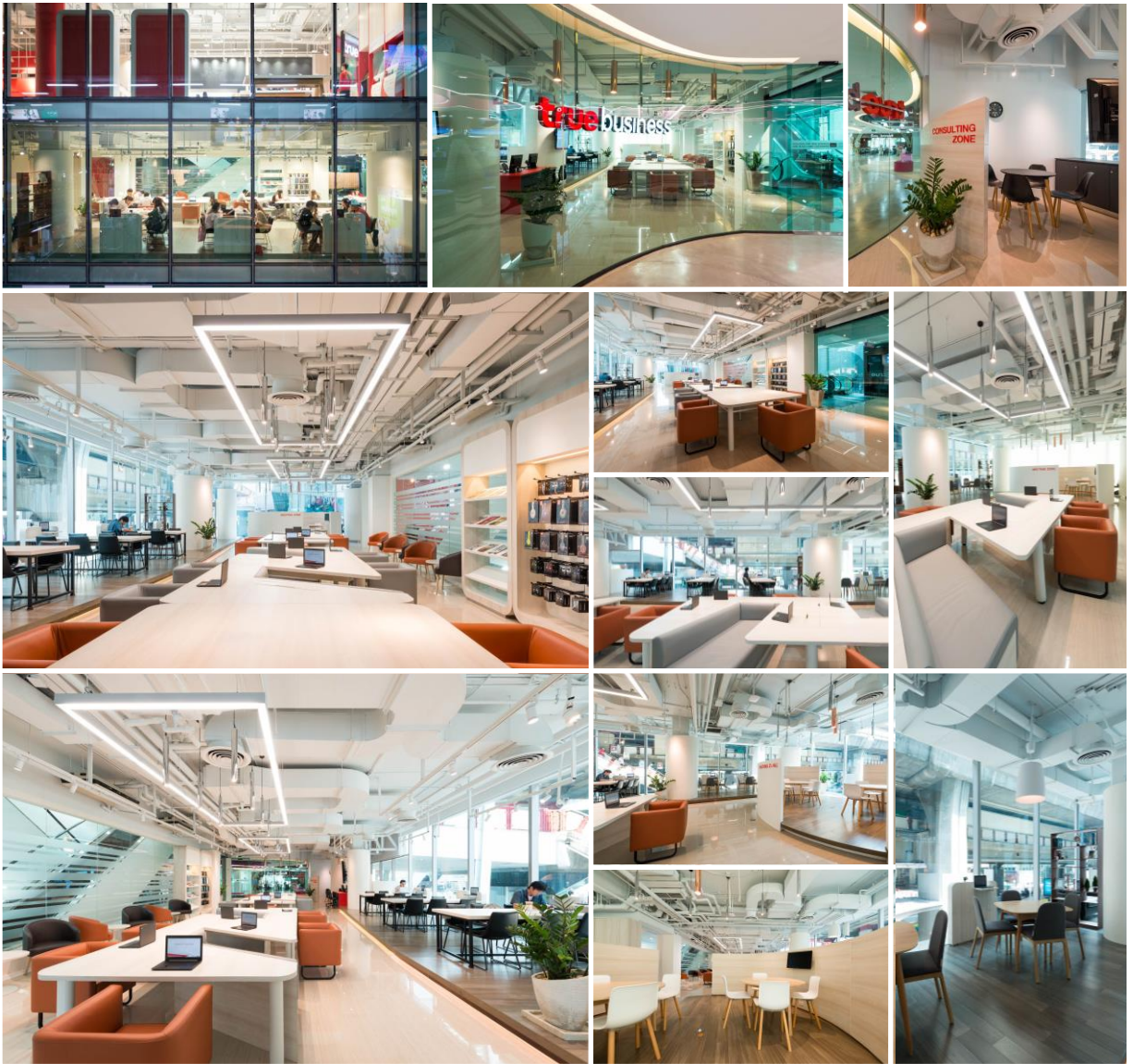
True Lifestyle Retail Co.,Ltd.

1st floor Digital Gateway, Siam Square, Bangkok

Total Budget : 6.5 Million Baht.

Scope of service :

- True Coffee
- Counter services & sales
- Dining area



true

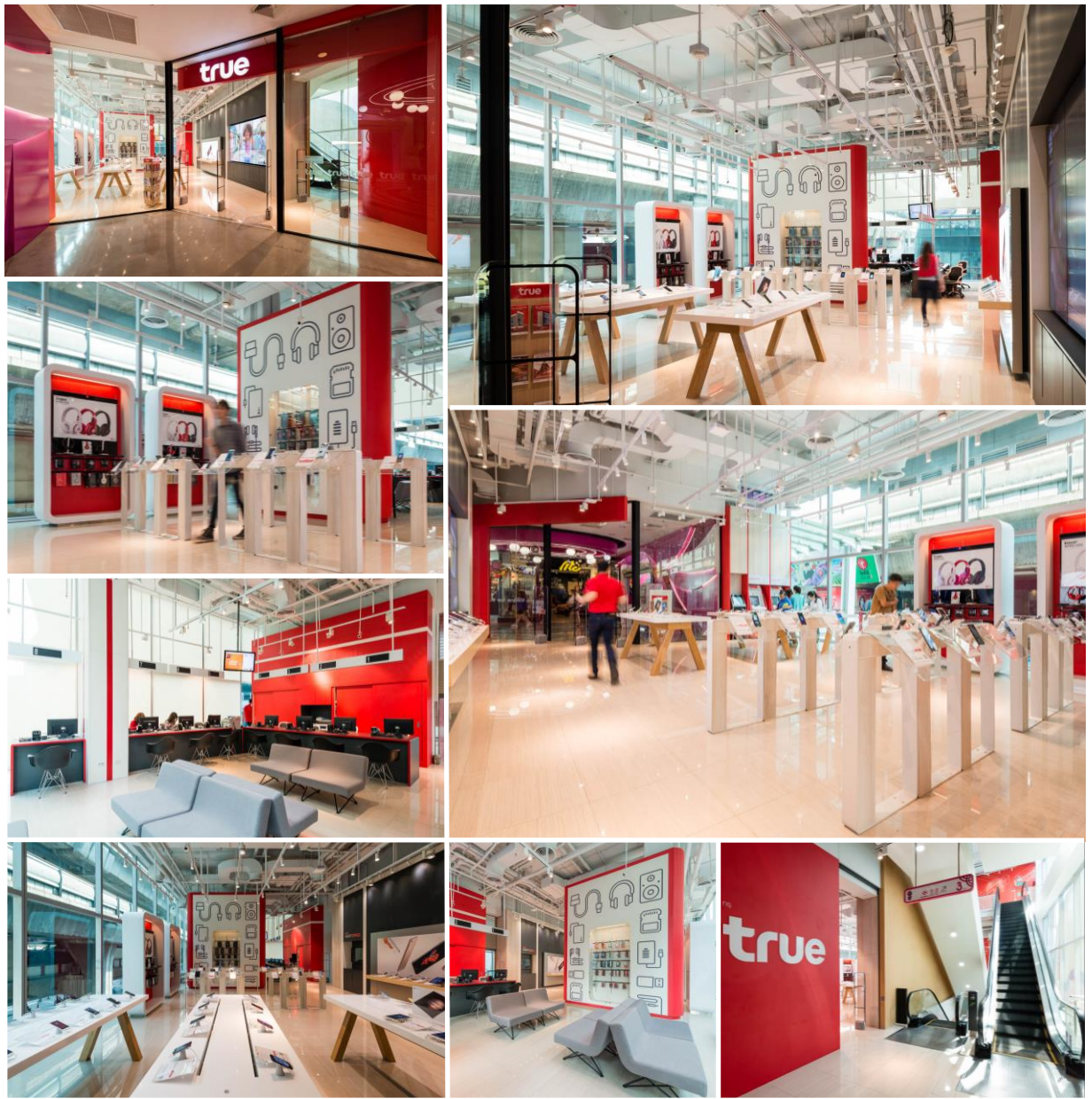
True Distribution & Sale

2nd floor Digital Gateway, Siam Square, Bangkok

Total Budget : 5.5 Million Baht.

Scope of service :

- True Business center



true

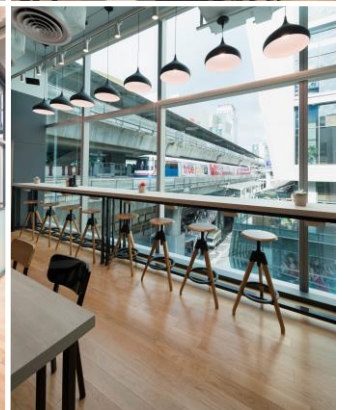
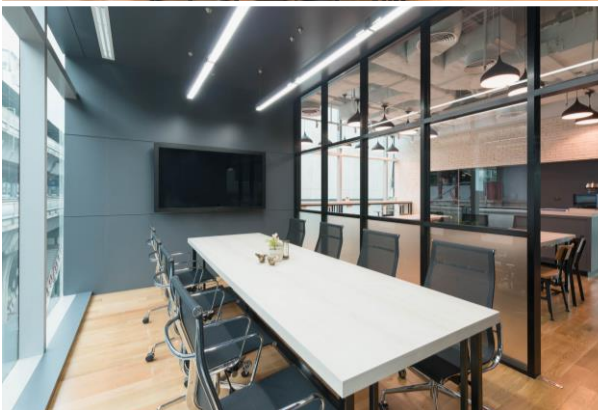
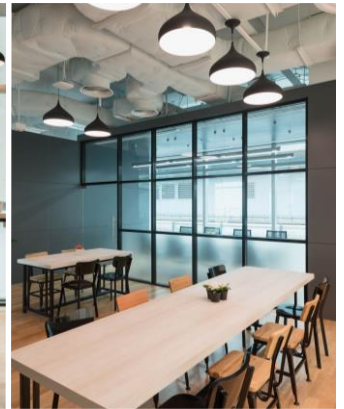
True Distribution & Sale

3rd floor Digital Gateway, Siam Square, Bangkok

Total Budget : 5.5 Million Baht.

Scope of service :

- Counter services & sales
- Display



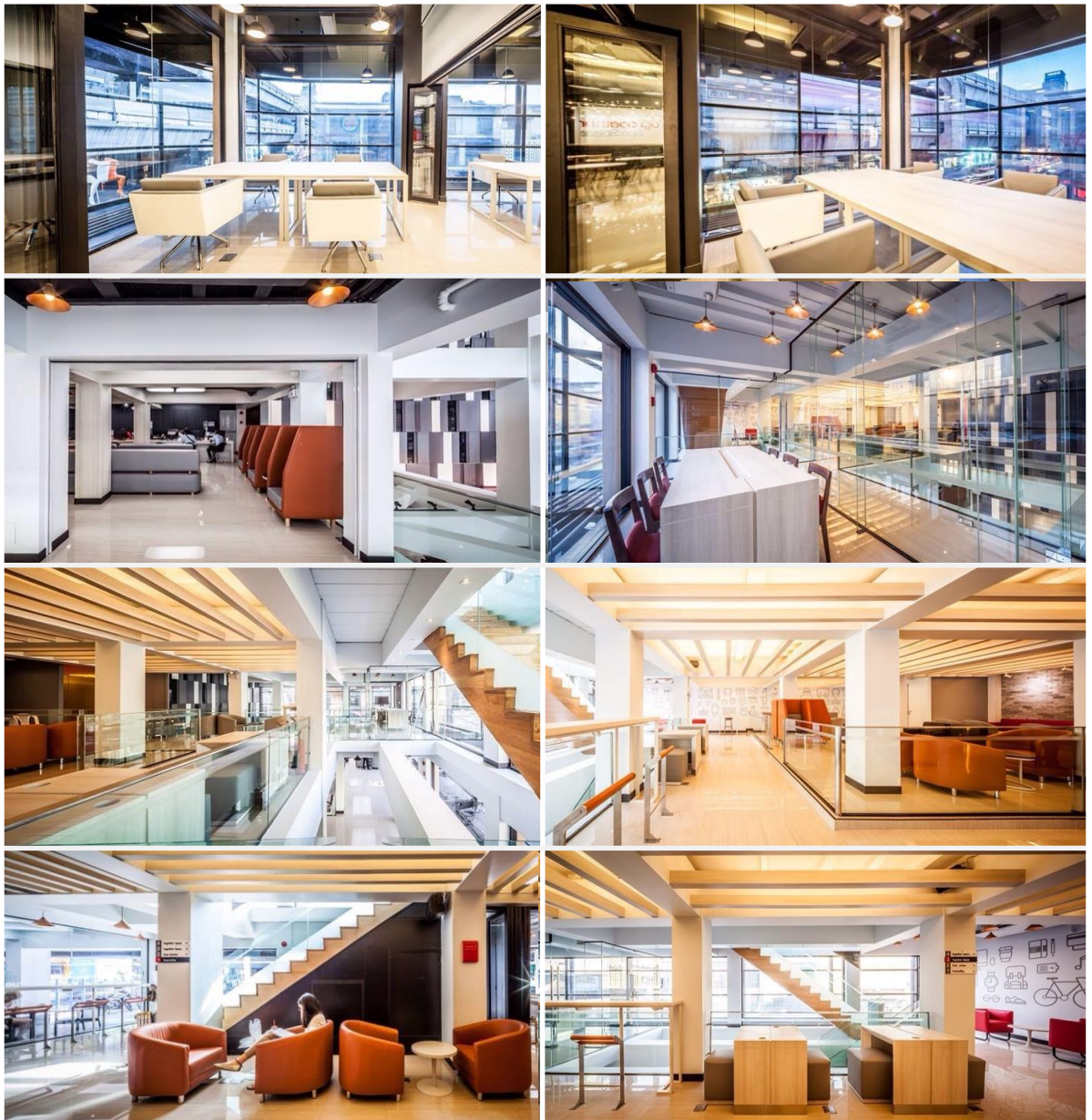
True Incube

4th floor Digital Gateway, Siam Square, Bangkok

Total Budget : 5.6 Million Baht.

Scope of service :

- co working space



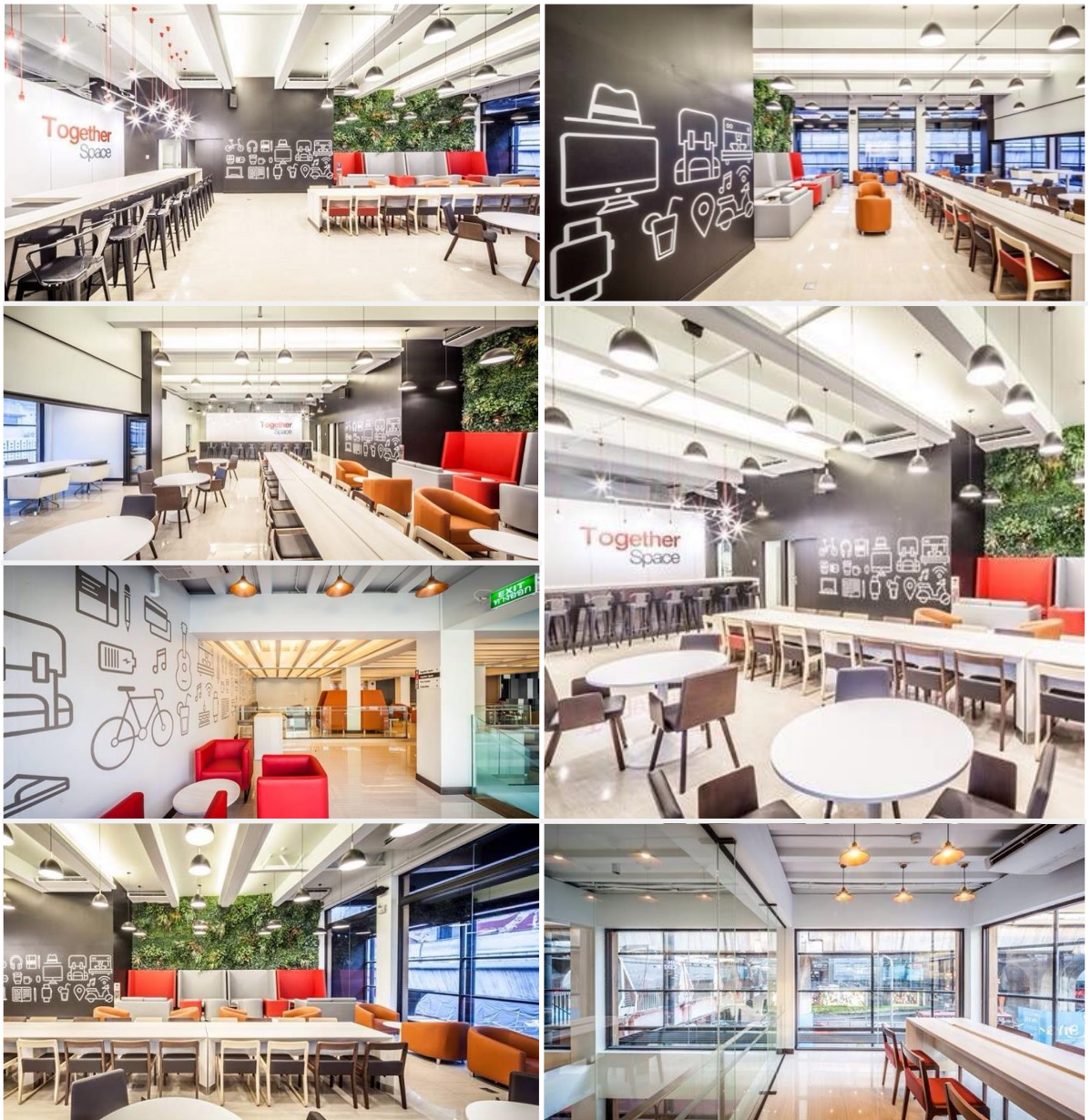
true

True Corporation Public Company Limited
Siam square Soi 2, Bangkok

Total Budget : 26.8 Million Baht.

Scope of service :

- True Coffee
- True Shop (Counter service & sales)
- True Black Card
- Co-working space



true

True Corporation Public Company Limited
Siam square Soi 2, Bangkok

Total Budget : 26.8 Million Baht.

Scope of service :

- True Coffee
- True Shop (Counter service & sales)
- True Black Card
- Co-working space



Practika Furniture Showroom & Co-Working Space
Central World Center, 4-1/2 Rachadumri, Bangkok

Total Budget : 8 Million Baht.

Scope of service :

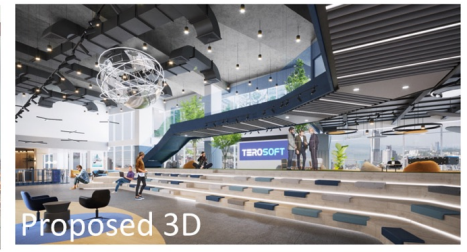
- Showroom
- Café & Retails
- Co-Working Space
- Meeting Room



Before



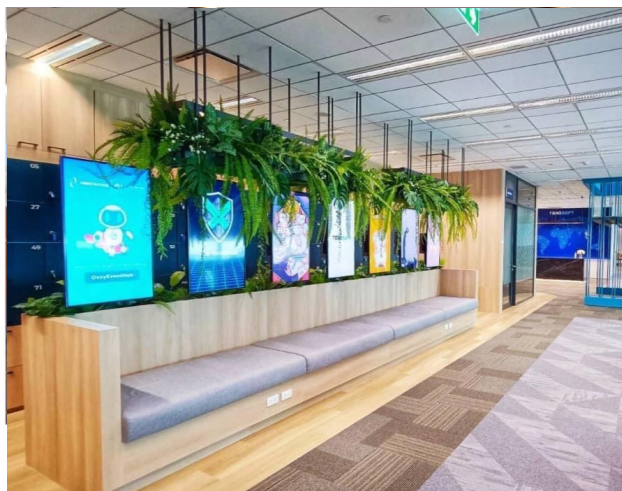
Work On Site



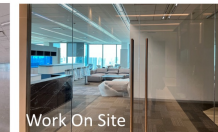
Proposed 3D



After



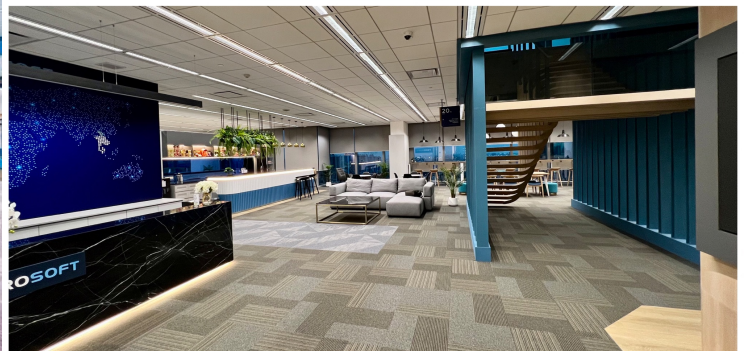
Before



Work On Site



Proposed 3D



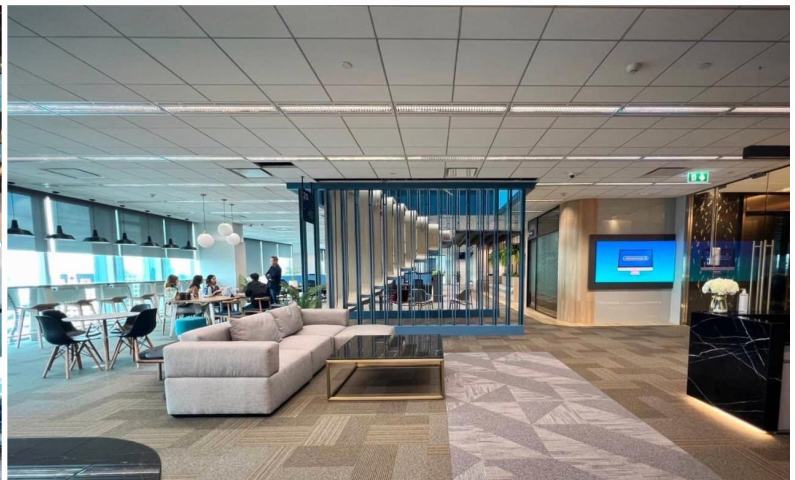
TEROSOFT Capital Group Co.,Ltd.

.20th - 21st Floor, Tlpc Tower 2 Rama 6 Rd. Bangkok

TEROSOFT

Scope of service :

- Office Zone
- Interior Design
- Executive Office & Board Meeting Rooms



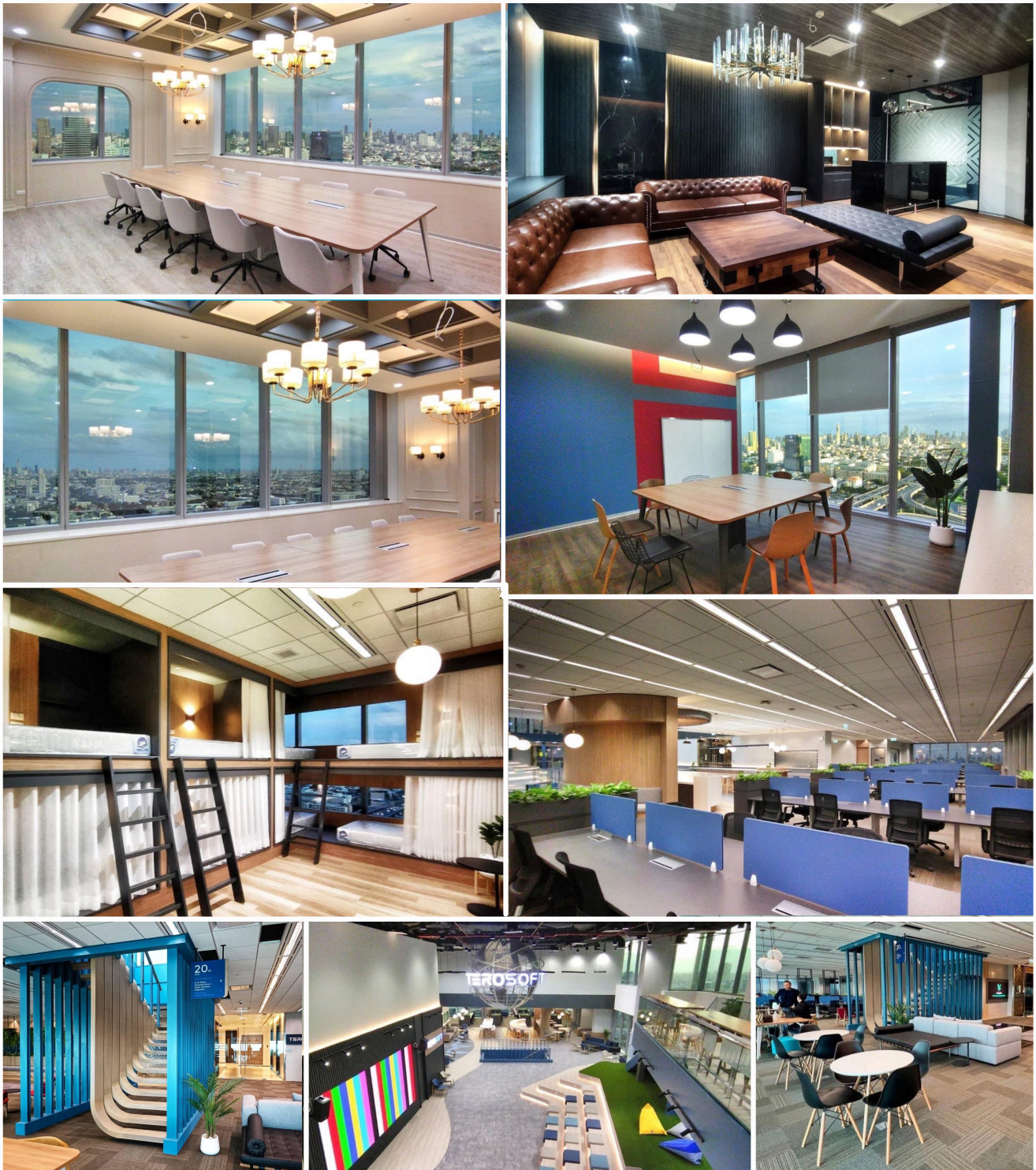
TEROSOFT Capital Group Co.,Ltd.

20th - 21st Floor, Tlpc Tower 2 Rama 6 Rd. Bangkok

TEROSOFT

Scope of service :

- Office Zone
- Interior Design
- Executive Office & Board Meeting Rooms



TEROSOFT Capital Group Co.,Ltd.

20th - 21st Floor, Tlpc Tower 2 Rama 6 Rd. Bangkok

TEROSOFT

Scope of service :

- Office Zone
- Interior Design
- Executive Office & Board Meeting Rooms



UBIS (ASIA) Public Co., Ltd.

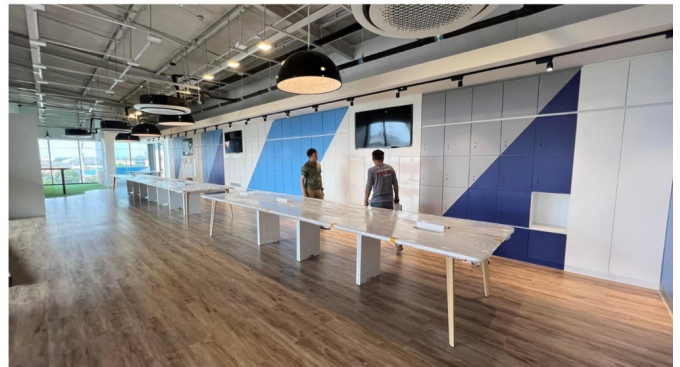
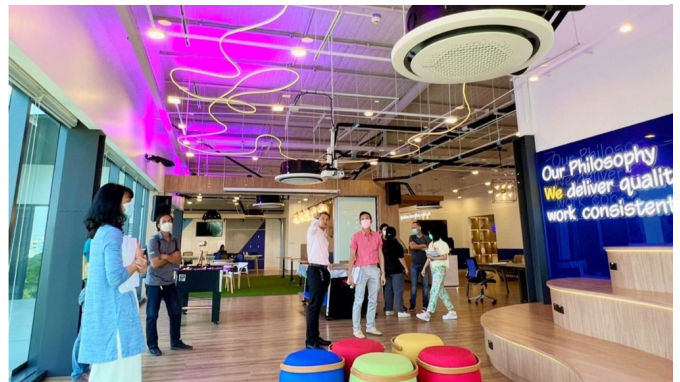
15th Floor TRR Tower Rama 3 Rd. Bangkok



UBIS (Asia) Public Co.,Ltd.

Scope of service :

- Office Zone
- Interior Design
- Executive Office & Board Meeting Rooms



BEC Lighting Showroom & Co-Working Space/ Café
89 12 Lam Luk Ka Rd, Lam Luk Ka District, Pathum Thani

Scope of service :

- Lighting Showroom & Co-Working Space/ Café
- Interior Design



Dream Office – C asean

Cyber World Tower, Bangkok

Interior Budget : 15.9 Millions Baht

Scope of service :

- Entrance Hall & Office
- Multifunction Meeting Room
- Office Area
- Relaxing Area
- Pantry



Dream Office – C asean

Cyber World Tower, Bangkok

Interior Budget : 15.9 Millions Baht

Scope of service :

- Entrance Hall & Office
- Multifunction Meeting Room
- Office Area
- Relaxing Area
- Pantry



DFDL Mekong (Thailand)

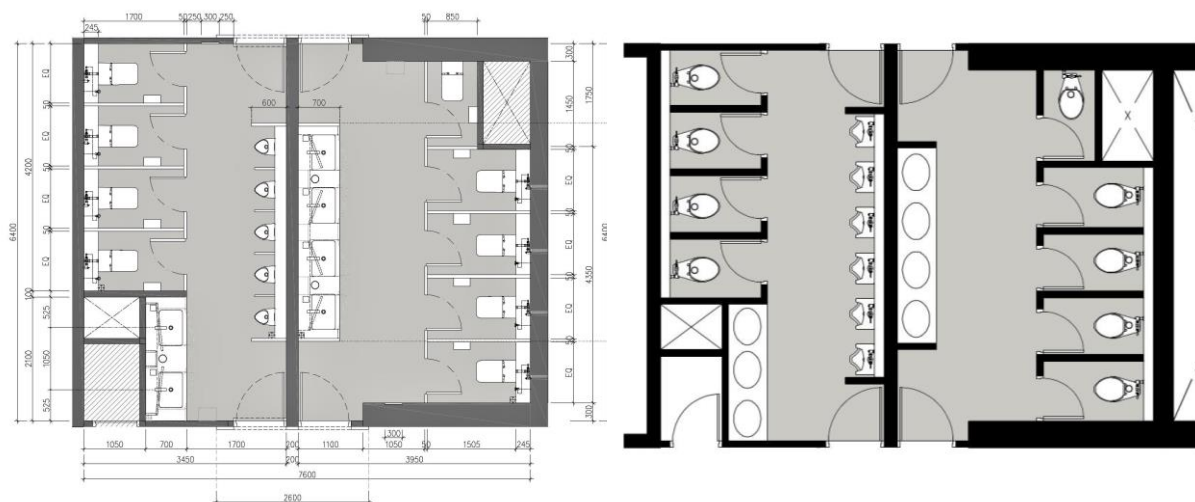
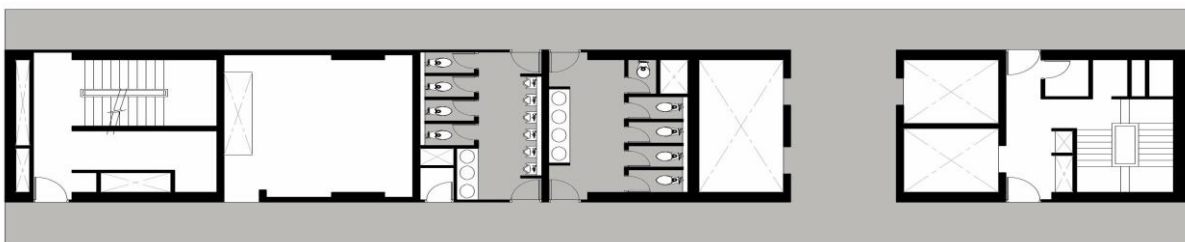
Rajanakarn Building, Sathorn Road, Bangkok

Interior Budget : 12 Millions Baht

Area : 631.27 Sq.m

Scope of service :

- Reception Area
- Manager Room / Private Rooms
- Co-working space
- Meeting Rooms
- Library/Study Room & Phone booth
- Relaxing Area
- Pantry
- Storage & Server Area



ALL SEASONS PROPERTY

24th FLOOR, M.THAI TOWER,
All Seasons Place, Wittayu Rd., Bangkok

Scope of service :

- M Thai at All Seasons Place : Renovation of Corridor & Restroom



WECONS & PARTNERS LTD.
WWW.WVKGROUP/CONSTRUCTION



T : 66 (0)2 214 6 750
F : 66 (0)2 214 6 755



ALL SEASONS PROPERTY

24th FLOOR, M.THAI TOWER,
All Seasons Place, Wittayu Rd., Bangkok

Scope of service :

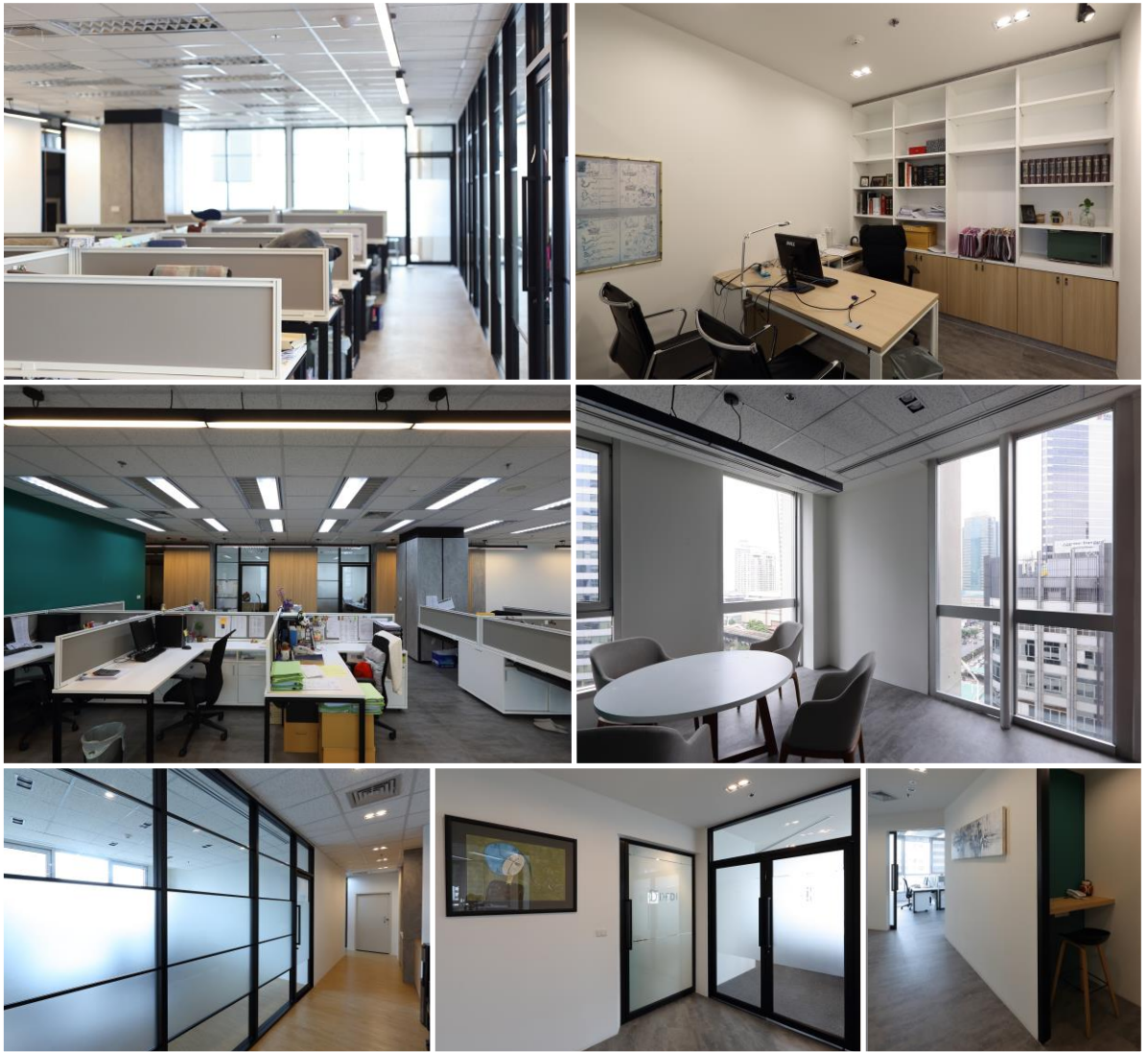
- M Thai at All Seasons Place : Renovation of Corridor & Restroom



WECONS & PARTNERS LTD.
WWW.WVKGROUP/CONSTRUCTION



T : 66 (0)2 214 6 750
F : 66 (0)2 214 6 755



DFDL Mekong (Thailand)

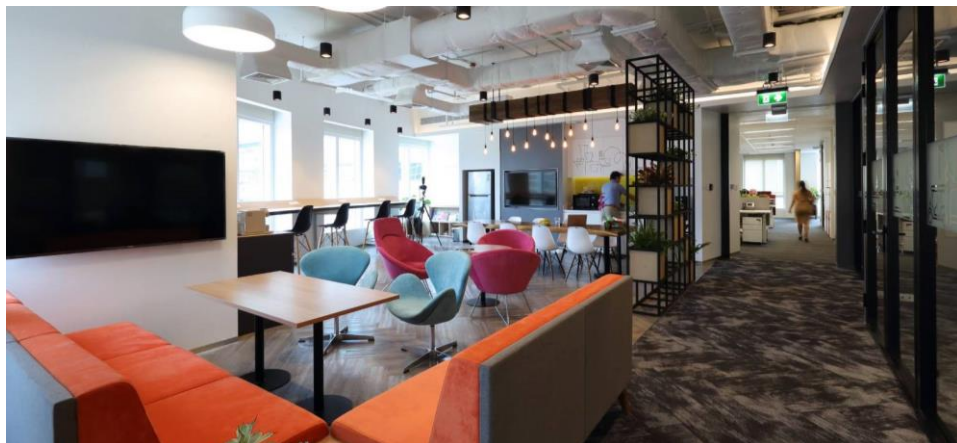
Rajanakarn Building, Sathorn Road, Bangkok

Interior Budget : 12 Millions Baht

Area : 631.27 Sq.m

Scope of service :

- Reception Area
- Manager Room / Private Rooms
- Co-working space
- Meeting Rooms
- Library/Study Room & Phone booth
- Relaxing Area
- Pantry
- Storage & Server Area



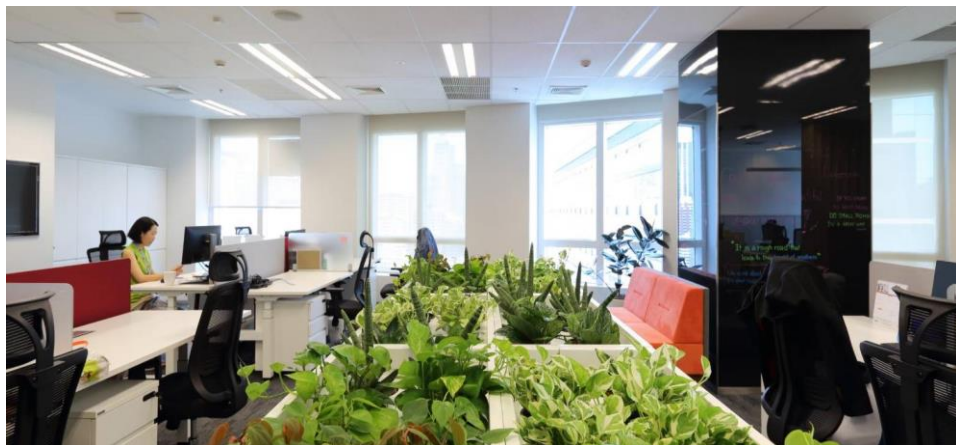
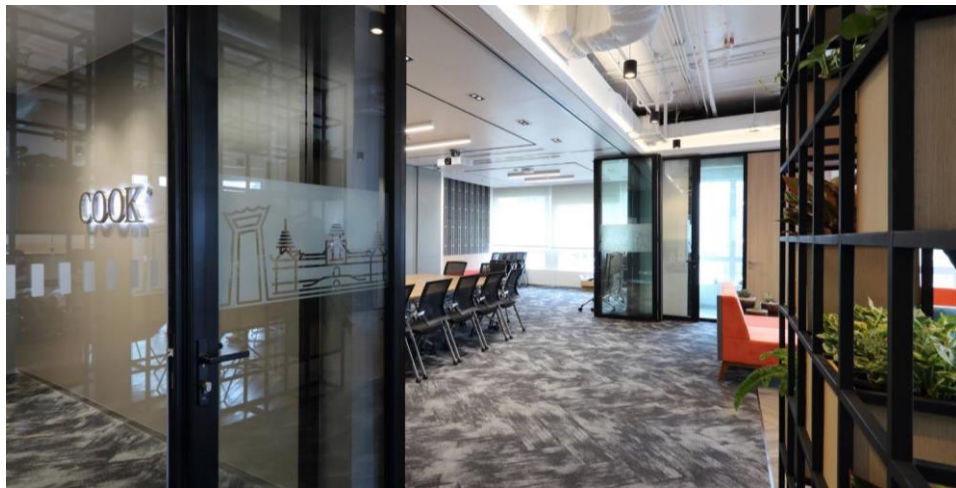
Cook Medical Office

Athenee Tower Witthayu Rd.,

Scope of service :

- Design Development and Building for Cook Medical Co.,Ltd





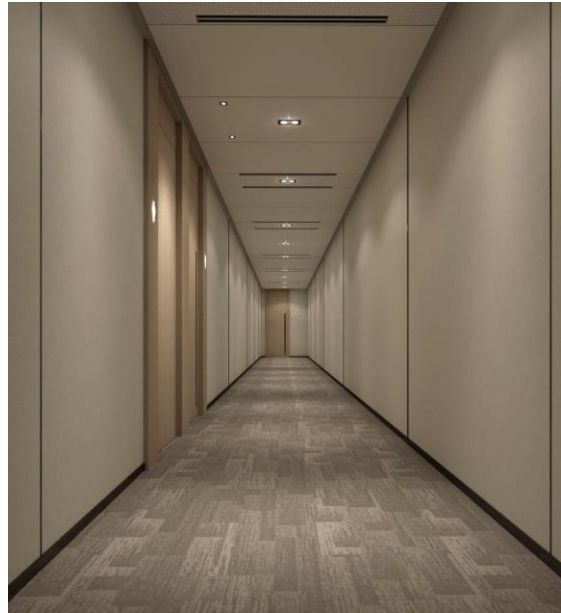
Cook Medical Office

Athenee Tower Witthayu Rd.,

Scope of service :

- Design Development and Building for Cook Medical Co.,Ltd





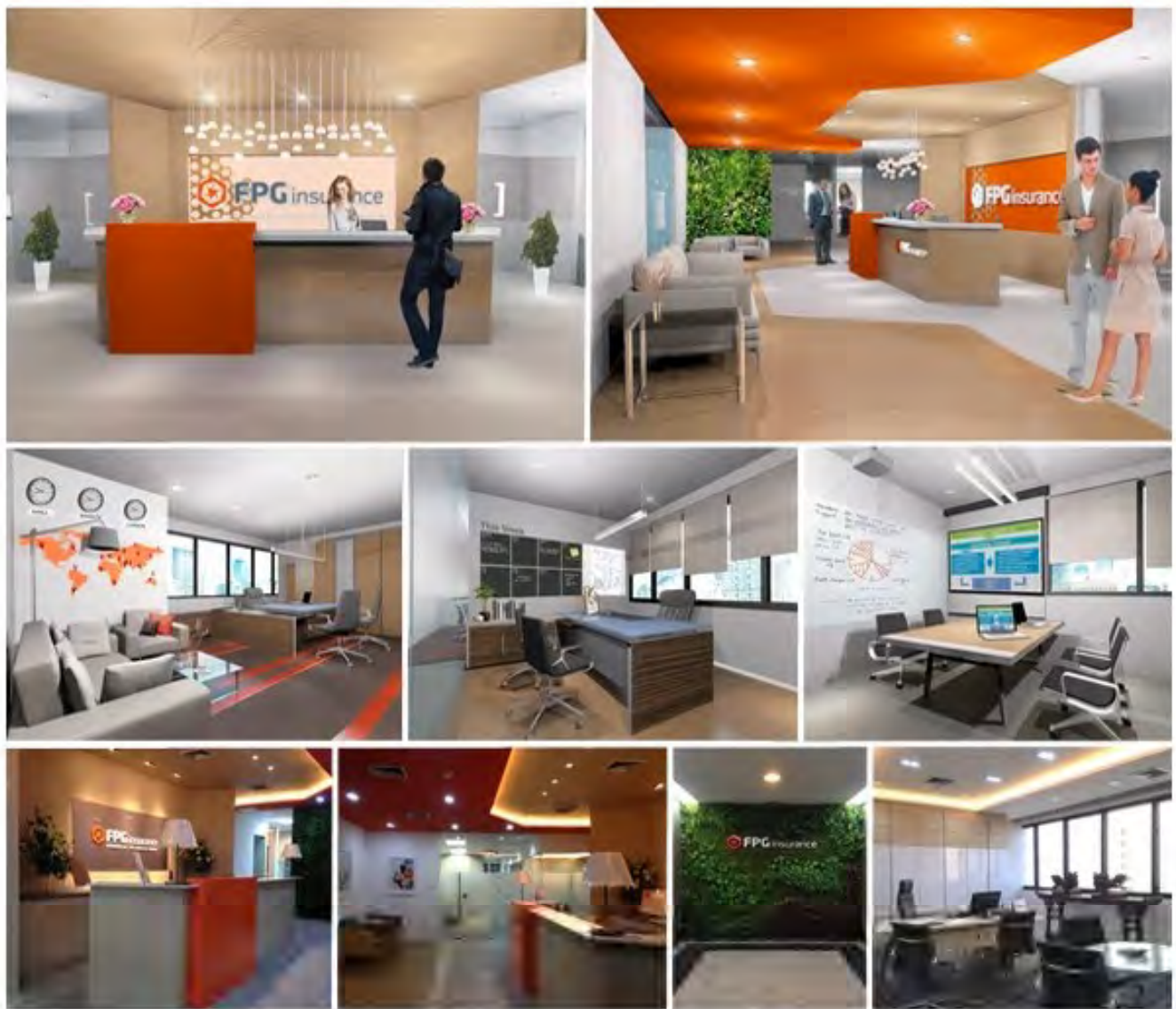
ALL SEASONS PROPERTY

24th FLOOR, M.THAI TOWER,
All Seasons Place, Wittayu Rd., Bangkok

Scope of service :

- M Thai at All Seasons Place : Renovation of Corridor & Restroom





FPG insurance
Thaniya Plaza, Bangkok

Interior Budget : 14.6 Millions Baht

Scope of service :

- Reception Area
- Board Room
- Meeting Rooms
- Manager Offices
- Supervisor Cubical
- Staff Open space Area



CCL LABEL
YOUR GLOBAL PARTNER

CCL LABEL - Bangkok III

Wellgrow Industrial Estate - Chachoengsao

Interior Budget 12.9 Million Baht.

Scope of service :

- ☑ Lobby
- ☑ Office
- ☑ Customer Lounge
- ☑ Main Meeting room
- ☑ Small Meeting room



HANA

Hi-Tech Industrial Estate, Ayutthaya

Interior Budget 4.10 Million Baht.

Scope of service :

- ☒ Lobby
- ☒ Corridor



NEC

Thaniya Plaza Office Building, Silom Rd. Bangkok

NEC

Welcome to NEC Logistics (Thailand)Co.,Ltd.

Total Budget : 2 Millions Baht

Scope of service :

- Reception & Lobby Area
- Meeting Room



The Stock Exchange of Thailand

Scope of service :

- Graphic Element for Streaming
- CI Manual Book
- Power point presentation template
- Ads Template For Media Online



PLANTHEON

Scope of service :

- Design Direction For Branding
- Corporate Identity
- Corporate Stationery



natura

TCC oil palm industry

NATURA

Scope of service :

- Design Direction For Branding
- Corporate Identity
- Corporate Stationery



lastica
TCC rubber industry

LASTICA

Scope of service :

- Design Direction For Branding
- Corporate Identity
- Corporate Stationery



ASIATUQUE The Riverfront

Scope of service :

- Identity Standard Manual Book
- Interior Signage



VERSO

International School, Bangkok

Scope of service :

- Schematic design
- Design development
- Signage drawing document
- Signage installation